



25 Dec 2021

## BLENDING CONSUMER PRICE INDEX (JULY 2020 = 100) – DECEMBER 2021

The month-on-month inflation rate in December 2021 was 2.06 percent shedding 0.07 percentage points on the November 2021 rate of 2.13 percent. **(See note on period of data collection below).**

This means that prices as measured by the all items blended CPI increased by an average rate of 2.06 percent from November 2021 to December 2021.

*The month-on-month inflation rate is given by the percentage change in the index of the relevant month of the current year compared with the index of the previous month in the current year.*

The month-on-month Food and Non Alcoholic Beverages inflation rate stood at 3.46 percent in December 2021, shedding 0.84 percentage points on the November 2021 rate of 4.30 percent. The month-on-month non-food inflation rate stood at 1.36 percent, gaining 0.29 percentage points on the November 2021 rate of 1.07 percent.

The blended CPI for the month ending December 2021 stood at 134.35 compared to 131.64 in November 2021 and 107.55 in December 2020.

The year-on-year inflation rate (annual percentage change) for the month of December 2021 as measured by the all items blended Consumer Price Index (CPI) stood at 24.92 percent.

This means that prices as measured by the all items blended CPI increased by an average of 24.92 percent between December 2020 and December 2021.

*The year-on-year inflation rate is given by the percentage change in the index of the relevant month of the current year compared with the index of the same month in the previous year.*

- ### Period of Data Collection

It is important to note that data on prices was collected during the period from 13 to 17 December 2021. The changes in prices in this report refer to that period of data collection.

## **The Methodology**

With effect from June 2020 ZIMSTAT is publishing the new Consumer Price Index (CPI) code named Blended Consumer Price Index. It measures the combined price changes of goods and services in both the USD and ZWL.

Two separate indices were computed, that is, the USD Consumer Price Index and the already available ZWL Consumer Price Index. The original CPI weights were split into USD and ZWL components using linking factors. These linking factors were the proportions of estimated household expenditure in USD and ZWL according to the COICOP classification. The resultant weights were then used to combine the two indices to come out with the blended index.

### ***Contact us***

Tel: 706681/7

E-mail: [prices@zimstat.co.zw](mailto:prices@zimstat.co.zw)

## **Mean Month on Month Rates**

The mean month-on-month inflation rate for the period January to December 2020 was 9.6 percent. The mean-month-on-month inflation rate for the period January to December 2021 was 1.9.

### ***Rebasing of Blended Consumer Price Index***

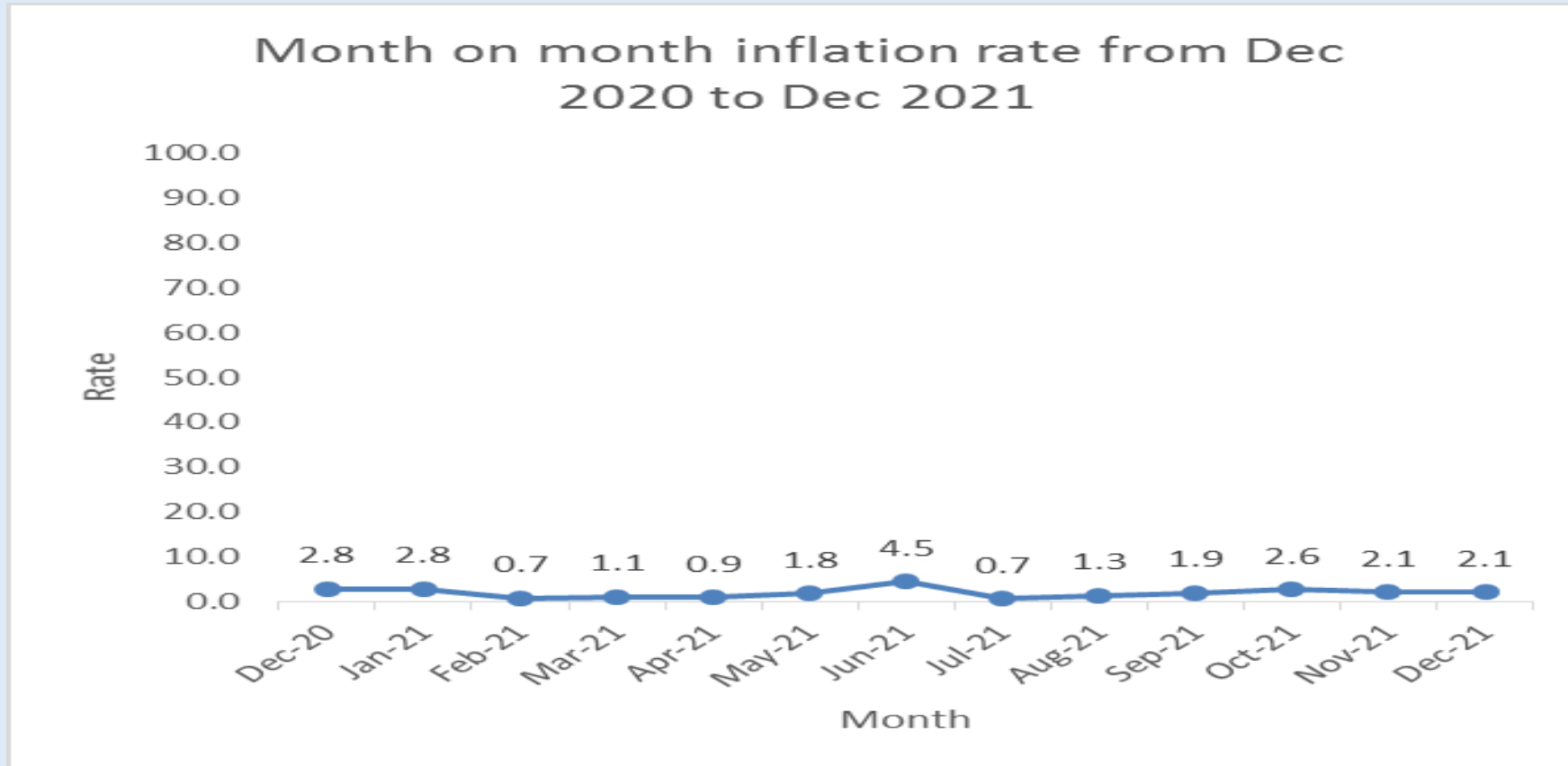
From August 2020 onwards, the blended CPI was rebased to July 2020 = 100. This was caused by the revision of the linking weights between the United States Dollar CPI and the ZWL CPI

For users who wish to continue with the old index reference period of June 2019 = 100, they should multiply the new All Items Index with the factor 6.49960354088181

**Table 1: Month-on-month inflation rate from December 2020 to December 2021**

Month	Dec-20	Jan-21	Feb-21	Mar-21	Apr-21	May-21	Jun-21	Jul-21	Aug-21	Sep-21	Oct-21	Nov-21	Dec-21
Rate	2.8	2.8	0.7	1.1	0.9	1.8	4.5	0.7	1.3	1.9	2.6	2.1	2.1

**Figure 1: Month-on-month inflation rate from December 2020 to December 2021**



# Blended Consumer Price Index (Jul 2020=100)

	Food and non alcoholic beverages	Alcoholic beverages and tobacco	Clothing and footwear	Housing water electricity gas and other fuels	Furniture, household equipment and maintenance	Health	Transport	Communication	Recreation and culture	Education	Restaurants and hotels	Miscellaneous goods and services	All Items	Inflation Rate (%) <u>Monthly</u>	Inflation Rate (%) Annual
<b>Weights</b>	<b>31.3</b>	<b>4.9</b>	<b>4.3</b>	<b>27.6</b>	<b>5.3</b>	<b>1.4</b>	<b>8.4</b>	<b>2.7</b>	<b>2.3</b>	<b>4.3</b>	<b>1.1</b>	<b>6.5</b>	<b>100.0</b>		
<b>2019</b>	22.4	24.5	20.5	51.7	20.3	33.7	22.6	8.9	22.7	46.0	31.0	18.5	24.7		
<b>2020</b>	80.8	78.3	75.7	93.8	72.3	78.2	71.1	84.2	75.9	99.1	77.6	75.7	79.8		223.3
<b>2021</b>	126.0	108.3	109.2	121.8	108.1	105.7	107.6	159.9	137.1	132.3	113.9	111.5	120.8		51.3
<b>2020 Jan</b>	38.9	36.2	31.5	70.0	29.8	40.6	32.3	10.9	32.1	55.9	44.5	29.3	37.9	1.8	
<b>Feb</b>	41.2	38.2	34.1	69.9	31.5	41.9	34.2	33.7	35.8	99.6	43.4	35.9	42.3	11.7	
<b>Mar</b>	48.1	48.7	45.9	87.7	40.8	51.8	39.8	35.2	53.0	98.2	46.1	42.6	50.6	19.6	
<b>Apr</b>	61.3	60.0	51.3	86.4	49.1	58.2	42.1	35.8	57.0	98.5	53.0	48.2	58.3	15.3	
<b>May</b>	69.8	75.4	59.3	91.6	59.1	62.7	49.9	37.1	62.5	98.2	63.3	57.8	66.2	13.5	
<b>Jun</b>	95.5	98.5	86.5	96.1	79.5	83.1	63.1	45.6	86.8	99.5	77.3	76.0	85.7	29.4	457.2
<b>Jul</b>	100.0	100.0	100.0	100.0	100.0	100.0	100.0	100.0	100.0	100.0	100.0	100.0	100.0	16.7	485.3
<b>Aug</b>	99.7	95.7	100.3	100.6	100.1	99.7	101.3	137.0	96.1	103.7	99.3	105.8	101.4	1.4	420.9
<b>Sep</b>	99.9	96.0	99.9	101.2	96.9	99.1	96.3	143.0	96.3	103.1	96.5	102.5	100.9	-0.5	376.3
<b>Oct</b>	101.0	95.3	97.2	105.9	93.2	99.0	96.7	144.3	96.5	103.6	98.9	102.9	102.4	1.4	249.6
<b>Nov</b>	104.7	97.0	99.4	107.0	93.0	100.6	97.8	144.3	97.1	115.4	102.6	103.1	104.7	2.2	215.0
<b>Dec</b>	109.5	98.9	102.6	109.8	94.4	101.2	100.3	144.0	97.3	114.1	106.7	104.5	107.6	2.8	188.9
<b>2021 Jan</b>	114.0	101.8	104.2	111.7	98.4	103.8	102.9	145.9	96.6	116.0	106.3	108.5	110.5	2.8	191.5
<b>Feb</b>	117.0	103.2	103.9	110.1	97.9	105.5	104.1	143.6	106.7	113.6	105.3	109.2	111.3	0.7	162.9
<b>Mar</b>	118.2	103.4	103.8	111.5	102.2	103.1	104.8	150.2	106.4	113.7	106.1	109.1	112.5	1.1	122.3
<b>Apr</b>	119.0	103.6	103.2	112.1	102.2	103.4	105.5	151.0	105.4	133.1	107.6	105.7	113.6	0.9	94.7
<b>May</b>	119.6	104.3	105.7	113.7	103.0	103.5	106.4	151.1	149.8	134.8	110.6	106.6	115.6	1.8	74.6
<b>Jun</b>	122.7	106.1	109.8	124.3	110.2	105.0	107.1	152.6	151.7	141.4	113.8	108.8	120.8	4.5	40.9
<b>Jul</b>	123.6	107.6	111.7	125.1	110.2	104.5	107.5	152.8	152.6	141.4	114.0	110.2	121.6	0.7	21.6
<b>Aug</b>	125.4	109.7	112.5	126.6	111.2	105.9	108.7	158.4	153.0	141.4	116.5	112.3	123.2	1.3	21.5
<b>Sep</b>	129.3	112.0	112.6	128.9	112.8	106.9	108.9	164.7	154.4	140.4	118.2	114.2	125.6	1.9	24.4
<b>Oct</b>	135.5	114.0	113.5	130.1	114.8	108.0	110.9	177.0	155.0	143.4	120.4	115.6	128.9	2.6	25.9
<b>Nov</b>	141.3	115.4	114.0	132.5	116.1	109.1	112.5	185.2	155.6	134.1	122.9	117.3	131.6	2.1	25.8
<b>Dec</b>	146.2	118.7	115.1	134.8	117.6	110.2	112.1	185.7	157.3	134.2	124.6	120.3	134.4	2.1	24.9

	Weights	Weights												Change in % from		
		Dec-20	Jan-21	Feb-21	Mar-21	Apr-21	May-21	Jun-21	Jul-21	Aug-21	Sep-21	Oct-21	Nov-21	Dec-21	Nov 21 to Dec 21	Dec 20 to Dec 21
Food & Non Alcoholic Beverages	31.30	109.47	113.96	117.00	118.25	119.01	119.57	122.68	123.63	125.43	129.29	135.51	141.34	146.22	3.46	33.57
Alcoholic Beverages & Tobacco	4.90	98.92	101.80	103.18	103.40	103.57	104.30	106.07	107.57	109.70	112.01	114.05	115.40	118.68	2.85	19.98
Clothing & Footwear	4.35	102.56	104.18	103.87	103.79	103.21	105.69	109.78	111.68	112.50	112.63	113.53	113.96	115.12	1.02	12.25
Housing, Water, Electricity, Gas & Other Fuel	27.62	109.83	111.70	110.15	111.55	112.11	113.66	124.32	125.10	126.56	128.91	130.12	132.45	134.77	1.75	22.71
Furniture And Equipment	5.29	94.40	98.42	97.94	102.22	102.17	103.03	110.23	110.15	111.24	112.83	114.84	116.13	117.64	1.31	24.62
Health	1.42	101.25	103.80	105.47	103.12	103.39	103.46	105.05	104.52	105.93	106.90	108.04	109.11	110.18	0.98	8.82
Transport	8.39	100.29	102.89	104.07	104.76	105.50	106.38	107.07	107.47	108.74	108.94	110.92	112.51	112.14	-0.33	11.82
Communication	2.65	143.97	145.87	143.58	150.18	151.03	151.15	152.64	152.79	158.43	164.67	176.96	185.23	185.72	0.26	28.99
Recreation And Culture	2.27	97.26	96.62	106.70	106.42	105.40	149.81	151.72	152.59	153.03	154.39	155.01	155.64	157.28	1.05	61.71
Education	4.25	114.12	115.95	113.65	113.70	133.14	134.81	141.44	141.41	141.36	140.37	143.36	134.09	134.18	0.06	17.57
Restaurants And Hotels	1.08	106.70	106.26	105.30	106.11	107.64	110.64	113.84	113.98	116.49	118.18	120.41	122.89	124.61	1.40	16.78
Miscellaneous Goods And Services	6.46	104.46	108.46	109.19	109.12	105.67	106.64	108.81	110.20	112.28	114.17	115.58	117.27	120.32	2.60	15.18
<b>All Items</b>	<b>100.00</b>	<b>107.55</b>	<b>110.52</b>	<b>111.30</b>	<b>112.51</b>	<b>113.57</b>	<b>115.61</b>	<b>120.80</b>	<b>121.61</b>	<b>123.21</b>	<b>125.60</b>	<b>128.89</b>	<b>131.64</b>	<b>134.35</b>	<b>2.06</b>	<b>24.92</b>
<b>Food and non alcoholic beverages</b>	<b>31.30</b>	<b>109.47</b>	<b>113.96</b>	<b>117.00</b>	<b>118.25</b>	<b>119.01</b>	<b>119.57</b>	<b>122.68</b>	<b>123.63</b>	<b>125.43</b>	<b>129.29</b>	<b>135.51</b>	<b>141.34</b>	<b>146.22</b>	<b>3.46</b>	<b>33.57</b>
<b>Non food</b>	<b>68.70</b>	<b>106.68</b>	<b>108.95</b>	<b>108.70</b>	<b>109.90</b>	<b>111.09</b>	<b>113.81</b>	<b>119.94</b>	<b>120.68</b>	<b>122.20</b>	<b>123.92</b>	<b>125.87</b>	<b>127.22</b>	<b>128.94</b>	<b>1.36</b>	<b>20.87</b>

# Consumer Price Index (Jul 2020=100)

	Inflation Rate (%) Monthly
<b>2020 Jan Rebased</b>	1.8
Feb	11.7
Mar	19.6
Apr	15.3
May	13.5
Jun	29.4
Jul	16.7
Aug	1.4
Sep	-0.5
Oct	1.4
Nov	2.2
Dec	2.8
<b>2021 Jan</b>	2.8
Feb	0.7
Mar	1.1
Apr	0.9
May	1.8
Jun	4.5
Jul	0.7
Aug	1.3
Sep	1.9
Oct	2.6
Nov	2.1
Dec	2.1
<b>Mean Month on Month rate of Inflation from Jan to Dec 2020</b>	9.6
<b>Mean Month on Month rate of Inflation from Jan to Dec 2021</b>	1.9