



25 Nov 2021

BLENDING CONSUMER PRICE INDEX (JULY 2020 = 100) – NOVEMBER 2021

The month-on-month inflation rate in November 2021 was 2.13 percent shedding 0.49 percentage points on the October 2021 rate of 2.62 percent. **(See note on period of data collection below).**

This means that prices as measured by the all items blended CPI increased by an average rate of 2.13 percent from October 2021 to November 2021.

The month-on-month inflation rate is given by the percentage change in the index of the relevant month of the current year compared with the index of the previous month in the current year.

The month-on-month Food and Non Alcoholic Beverages inflation rate stood at 4.30 percent in November 2021, shedding 0.50 percentage points on the October 2021 rate of 4.80 percent. The month-on-month non-food inflation rate stood at 1.07 percent, shedding 0.51 percentage points on the October 2021 rate of 1.58 percent.

The blended CPI for the month ending November 2021 stood at 131.64 compared to 128.89 in October 2021 and 104.67 in November 2020.

The year-on-year inflation rate (annual percentage change) for the month of November 2021 as measured by the all items blended Consumer Price Index (CPI) stood at 25.76 percent.

This means that prices as measured by the all items blended CPI increased by an average of 25.76 percent between November 2020 and November 2021.

The year-on-year inflation rate is given by the percentage change in the index of the relevant month of the current year compared with the index of the same month in the previous year.

- **Period of Data Collection**

It is important to note that data on prices was collected during the period from 11 to 17 November 2021. The changes in prices in this report refer to that period of data collection.

The Methodology

With effect from June 2020 ZIMSTAT is publishing the new Consumer Price Index (CPI) code named Blended Consumer Price Index. It measures the combined price changes of goods and services in both the USD and ZWL.

Two separate indices were computed, that is, the USD Consumer Price Index and the already available ZWL Consumer Price Index. The original CPI weights were split into USD and ZWL components using linking factors. These linking factors were the proportions of estimated household expenditure in USD and ZWL according to the COICOP classification. The resultant weights were then used to combine the two indices to come out with the blended index.

Contact us

Tel: 706681/7

E-mail: prices@zimstat.co.zw

Mean Month on Month Rates

The mean month-on-month inflation rate for the period January to December 2020 was 9.6 percent. The mean month-on-month inflation rate for the period January to November 2021 was 1.9.

Rebasing of Blended Consumer Price Index

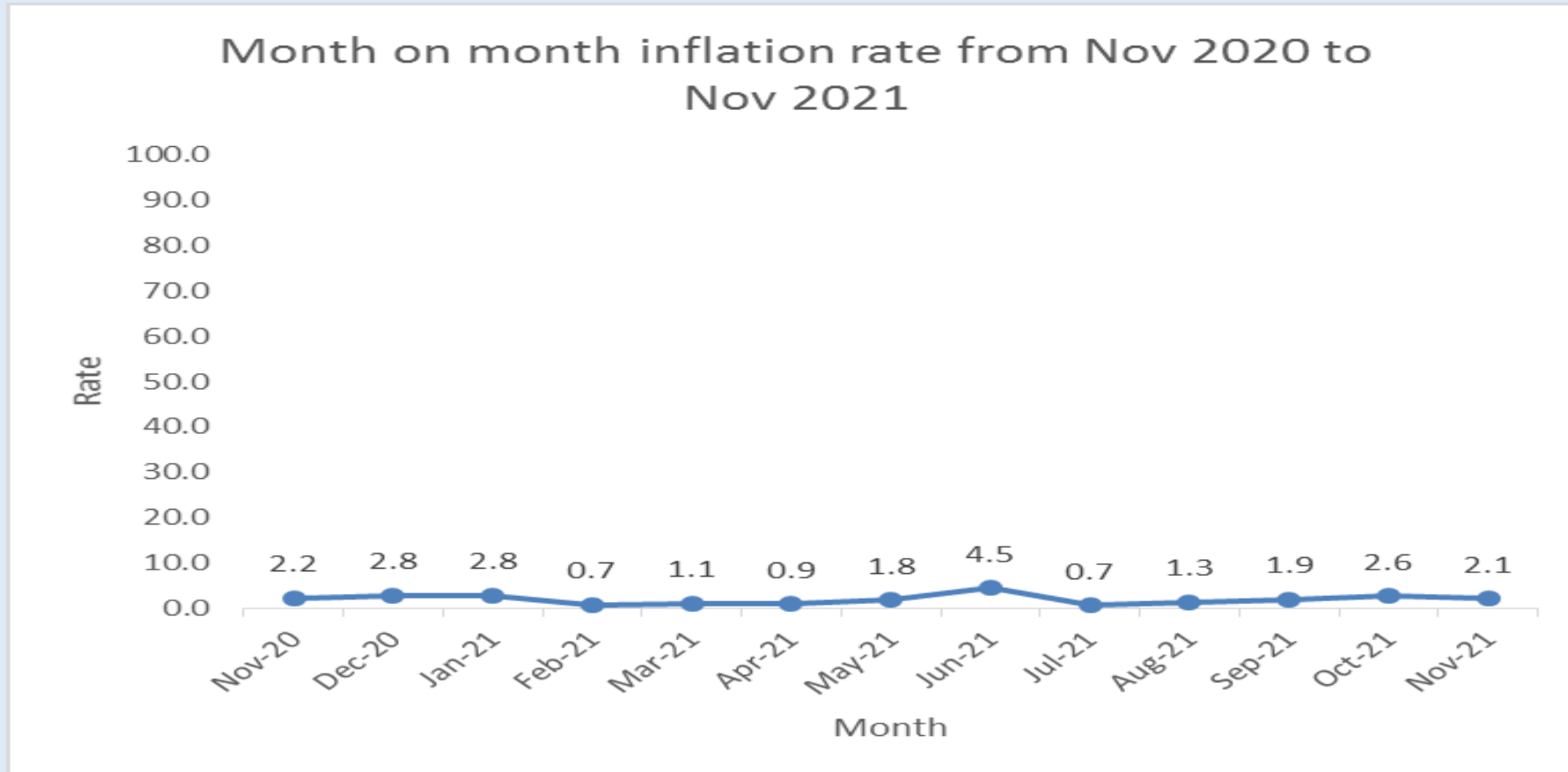
From August 2020 onwards, the blended CPI was rebased to July 2020 = 100. This was caused by the revision of the linking weights between the United States Dollar CPI and the ZWL CPI

For users who wish to continue with the old index reference period of June 2019 = 100, they should multiply the new All Items Index with the factor 6.49960354088181

Table 1: Month-on-month inflation rate from November 2020 to November 2021

Month	Nov-20	Dec-20	Jan-21	Feb-21	Mar-21	Apr-21	May-21	Jun-21	Jul-21	Aug-21	Sep-21	Oct-21	Nov-21
Rate	2.2	2.8	2.8	0.7	1.1	0.9	1.8	4.5	0.7	1.3	1.9	2.6	2.1

Figure 1: Month-on-month inflation rate from November 2020 to November 2021



Blended Consumer Price Index (Jul 2020=100)

	Food and non alcoholic beverages	Alcoholic beverages and tobacco	Clothing and footwear	Housing water electricity gas and other fuels	Furniture, household equipment and maintenance	Health	Transport	Communication	Recreation and culture	Education	Restaurants and hotels	Miscellaneous goods and services	All Items	Inflation Rate (%) <u>Monthly</u>	Inflation Rate (%) <u>Annual</u>
Weights	31.3	4.9	4.3	27.6	5.3	1.4	8.4	2.7	2.3	4.3	1.1	6.5	100.0		
2019 Jun	11.4	15.4	12.6	39.7	12.9	29.6	14.0	6.2	13.7	41.3	24.3	10.7	15.4		
Jul	13.5	17.5	15.1	38.6	15.3	32.1	15.5	6.3	16.7	44.2	27.1	13.5	17.1	11.1	
Aug	15.6	19.7	16.1	43.5	16.2	30.0	19.6	9.2	18.1	45.5	27.7	14.7	19.5	13.9	
Sep	18.3	20.9	17.7	43.3	18.0	30.5	21.6	9.3	20.8	43.9	24.7	16.5	21.2	8.9	
Oct	27.0	29.1	24.1	63.1	23.8	36.0	27.1	9.7	26.7	44.8	30.7	20.8	29.3	38.2	
Nov	32.9	33.0	27.6	64.3	26.5	37.9	28.8	10.7	30.8	51.4	39.4	24.2	33.2	13.5	
Dec	38.0	35.9	30.5	69.6	29.5	39.8	31.7	10.8	31.9	51.1	43.1	29.1	37.2	12.0	
2020 Jan	38.9	36.2	31.5	70.0	29.8	40.6	32.3	10.9	32.1	55.9	44.5	29.3	37.9	1.8	
Feb	41.2	38.2	34.1	69.9	31.5	41.9	34.2	33.7	35.8	99.6	43.4	35.9	42.3	11.7	
Mar	48.1	48.7	45.9	87.7	40.8	51.8	39.8	35.2	53.0	98.2	46.1	42.6	50.6	19.6	
Apr	61.3	60.0	51.3	86.4	49.1	58.2	42.1	35.8	57.0	98.5	53.0	48.2	58.3	15.3	
May	69.8	75.4	59.3	91.6	59.1	62.7	49.9	37.1	62.5	98.2	63.3	57.8	66.2	13.5	
Jun	95.5	98.5	86.5	96.1	79.5	83.1	63.1	45.6	86.8	99.5	77.3	76.0	85.7	29.4	457.2
Jul	100.0	100.0	100.0	100.0	100.0	100.0	100.0	100.0	100.0	100.0	100.0	100.0	100.0	16.7	485.3
Aug	99.7	95.7	100.3	100.6	100.1	99.7	101.3	137.0	96.1	103.7	99.3	105.8	101.4	1.4	420.9
Sep	99.9	96.0	99.9	101.2	96.9	99.1	96.3	143.0	96.3	103.1	96.5	102.5	100.9	-0.5	376.3
Oct	101.0	95.3	97.2	105.9	93.2	99.0	96.7	144.3	96.5	103.6	98.9	102.9	102.4	1.4	249.6
Nov	104.7	97.0	99.4	107.0	93.0	100.6	97.8	144.3	97.1	115.4	102.6	103.1	104.7	2.2	215.0
Dec	109.5	98.9	102.6	109.8	94.4	101.2	100.3	144.0	97.3	114.1	106.7	104.5	107.6	2.8	188.9
2021 Jan	114.0	101.8	104.2	111.7	98.4	103.8	102.9	145.9	96.6	116.0	106.3	108.5	110.5	2.8	191.5
Feb	117.0	103.2	103.9	110.1	97.9	105.5	104.1	143.6	106.7	113.6	105.3	109.2	111.3	0.7	162.9
Mar	118.2	103.4	103.8	111.5	102.2	103.1	104.8	150.2	106.4	113.7	106.1	109.1	112.5	1.1	122.3
Apr	119.0	103.6	103.2	112.1	102.2	103.4	105.5	151.0	105.4	133.1	107.6	105.7	113.6	0.9	94.7
May	119.6	104.3	105.7	113.7	103.0	103.5	106.4	151.1	149.8	134.8	110.6	106.6	115.6	1.8	74.6
Jun	122.7	106.1	109.8	124.3	110.2	105.0	107.1	152.6	151.7	141.4	113.8	108.8	120.8	4.5	40.9
Jul	123.6	107.6	111.7	125.1	110.2	104.5	107.5	152.8	152.6	141.4	114.0	110.2	121.6	0.7	21.6
Aug	125.4	109.7	112.5	126.6	111.2	105.9	108.7	158.4	153.0	141.4	116.5	112.3	123.2	1.3	21.5
Sep	129.3	112.0	112.6	128.9	112.8	106.9	108.9	164.7	154.4	140.4	118.2	114.2	125.6	1.9	24.4
Oct	135.5	114.0	113.5	130.1	114.8	108.0	110.9	177.0	155.0	143.4	120.4	115.6	128.9	2.6	25.9
Nov	141.3	115.4	114.0	132.5	116.1	109.1	112.5	185.2	155.6	134.1	122.9	117.3	131.6	2.1	25.8

	Weights															Change in % from	Change in % from
		Jul-20	Nov-20	Dec-20	Jan-21	Feb-21	Mar-21	Apr-21	May-21	Jun-21	Jul-21	Aug-21	Sep-21	Oct-21	Nov-21	Oct 21 to Nov 21	Nov 20 to Nov 21
Food & Non Alcoholic Beverages	31.30	100.00	104.71	109.47	113.96	117.00	118.25	119.01	119.57	122.68	123.63	125.43	129.29	135.51	141.34	4.30	34.97
Alcoholic Beverages & Tobacco	4.90	100.00	96.97	98.92	101.80	103.18	103.40	103.57	104.30	106.07	107.57	109.70	112.01	114.05	115.40	1.19	19.00
Clothing & Footwear	4.35	100.00	99.37	102.56	104.18	103.87	103.79	103.21	105.69	109.78	111.68	112.50	112.63	113.53	113.96	0.37	14.68
Housing, Water, Electricity, Gas & Other Fuel	27.62	100.00	106.95	109.83	111.70	110.15	111.55	112.11	113.66	124.32	125.10	126.56	128.91	130.12	132.45	1.79	23.84
Furniture And Equipment	5.29	100.00	93.03	94.40	98.42	97.94	102.22	102.17	103.03	110.23	110.15	111.24	112.83	114.84	116.13	1.12	24.83
Health	1.42	100.00	100.63	101.25	103.80	105.47	103.12	103.39	103.46	105.05	104.52	105.93	106.90	108.04	109.11	0.99	8.43
Transport	8.39	100.00	97.81	100.29	102.89	104.07	104.76	105.50	106.38	107.07	107.47	108.74	108.94	110.92	112.51	1.44	15.03
Communication	2.65	100.00	144.30	143.97	145.87	143.58	150.18	151.03	151.15	152.64	152.79	158.43	164.67	176.96	185.23	4.67	28.36
Recreation And Culture	2.27	100.00	97.09	97.26	96.62	106.70	106.42	105.40	149.81	151.72	152.59	153.03	154.39	155.01	155.64	0.41	60.30
Education	4.25	100.00	115.40	114.12	115.95	113.65	113.70	133.14	134.81	141.44	141.41	141.36	140.37	143.36	134.09	-6.46	16.20
Restaurants And Hotels	1.08	100.00	102.63	106.70	106.26	105.30	106.11	107.64	110.64	113.84	113.98	116.49	118.18	120.41	122.89	2.06	19.74
Miscellaneous Goods And Services	6.46	100.00	103.10	104.46	108.46	109.19	109.12	105.67	106.64	108.81	110.20	112.28	114.17	115.58	117.27	1.47	13.75
All Items	100.00	100.00	104.67	107.55	110.52	111.30	112.51	113.57	115.61	120.80	121.61	123.21	125.60	128.89	131.64	2.13	25.76
Food and non alcoholic beverages	31.30	100.00	104.71	109.47	113.96	117.00	118.25	119.01	119.57	122.68	123.63	125.43	129.29	135.51	141.34	4.30	34.97
Non food	68.70	100.00	104.65	106.68	108.95	108.70	109.90	111.09	113.81	119.94	120.68	122.20	123.92	125.87	127.22	1.07	21.56



Consumer Price Index (Jul 2020=100)

	Inflation Rate (%) Monthly
2020 Jan Rebased	1.8
Feb	11.7
Mar	19.6
Apr	15.3
May	13.5
Jun	29.4
Jul	16.7
Aug	1.4
Sep	-0.5
Oct	1.4
Nov	2.2
Dec	2.8
2021 Jan	2.8
Feb	0.7
Mar	1.1
Apr	0.9
May	1.8
Jun	4.5
Jul	0.7
Aug	1.3
Sep	1.9
Oct	2.6
Nov	2.1
Mean Month on Month rate of Inflation from Jan to Dec 2020	9.6
Mean Month on Month rate of Inflation from Jan to Nov 2021	1.9