



26 Aug 2021

# CONSUMER PRICE INDEX (FEBRUARY 2019 = 100) – AUGUST 2021

The month on month inflation rate in August 2021 was 4.18 percent gaining 1.62 percentage points on the July 2021 rate of 2.56 percent. **(See note on period of data collection below).**

This means that prices as measured by the all items CPI increased by an average rate of 4.18 percent from July 2021 to August 2021.

- *The month-on-month inflation rate is given by the percentage change in the index of the relevant month of the current year compared with the index of the previous month in the current year.*

The month on month Food and Non Alcoholic Beverages inflation rate stood at 3.14 percent in August 2021, gaining 0.63 percentage points on the July 2021 rate of 2.51 percent. The month on month non-food inflation rate stood at 4.95 percent, gaining 2.35 percentage points on the July 2021 rate of 2.60 percent.

- 
- 
- 
- 

The CPI for the month ending August 2021 stood at 3,191.05 compared to 3,062.93 in July 2021 and 2,123.97 in August 2020.

The year on year inflation rate (annual percentage change) for the month of August 2021 as measured by the all items Consumer Price Index (CPI) stood at 50.24 percent.

This means that prices as measured by the all items CPI increased by an average of 50.24 percent between August 2020 and August 2021.

*The year-on-year inflation rate is given by the percentage change in the index of the relevant month of the current year compared with the index of the same month in the previous year.*

- **Period of Data Collection**

It is important to note that data on prices was collected during the period from 11 to 17 August 2021. The changes in prices in this report refer to that period of data collection.

## THE NEW CONSUMER PRICE INDEX

With effect from March 2019 ZIMSTAT is publishing the new Consumer Price Index (CPI) with new weights and a classification. The use of a Classification of Individual Consumption by Purpose (COICOP) resulted in the creation of a new classification which resulted in coming up with 83 classes, 41 groups and 12 divisions. The number of items in the CPI basket is 495.

The implementation of the COICOP classification is also part of the harmonisation project of Consumer Price Indices in different regions like the SADC region. All member states are supposed to adopt the new procedure to enable inter country comparisons of the CPI and the rate of inflation. The new weights are therefore applicable from February 2019 onwards.

### **Mean Month on Month Rates**

The mean month on month inflation rate for the period January to December 2020 was 13.8 percent while the mean month on month inflation rate for the same period in 2019 was 17.0 percent. The mean month on month inflation rate from January to August 2021 was 3.2 percent.

### ***Contact us***

Tel : 706681/7

E-mail : [prices@zimstat.co.zw](mailto:prices@zimstat.co.zw)

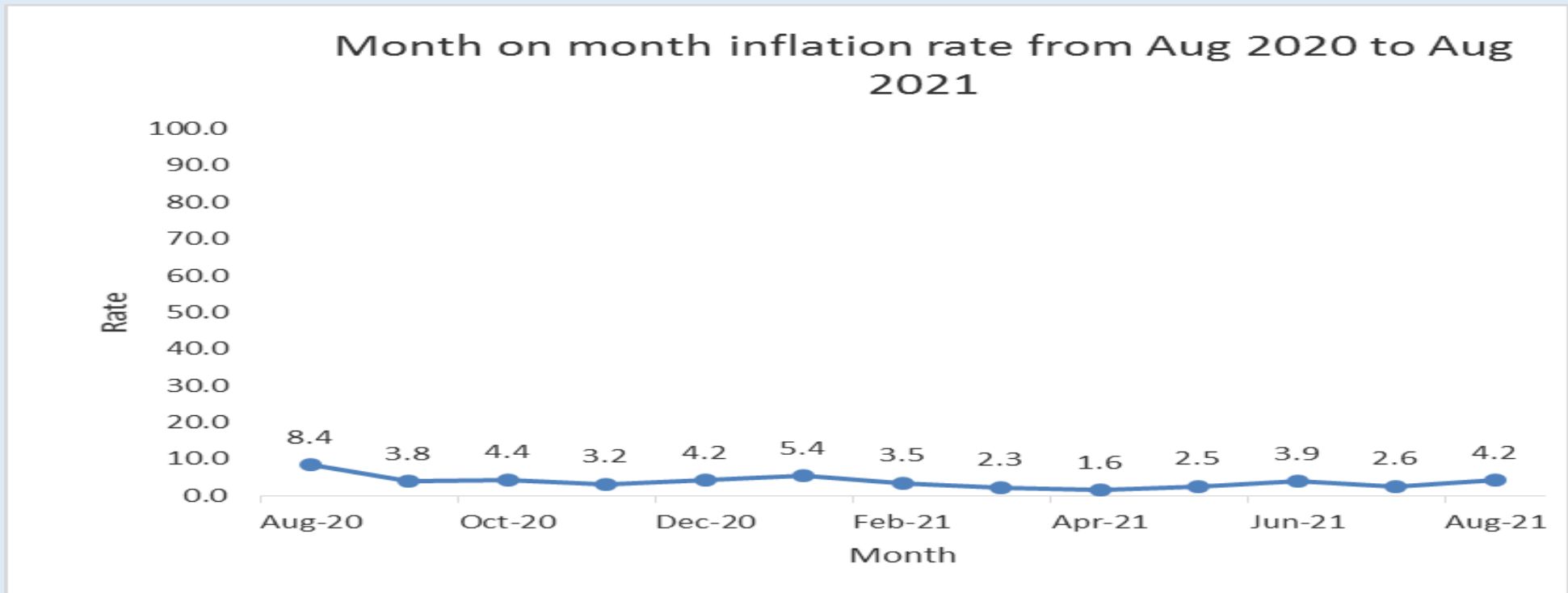
### **Provincial Consumer Price Indices**

Provincial Consumer Price Indices are shown on page 9. Provincial month on month Consumer Price Indices are shown on page 10 and Provincial year on year inflation rates are shown on page 11.

**Table 1: Month on month inflation rate from August 2020 to August 2021**

Months	Aug-20	Sep-20	Oct-20	Nov-20	Dec-20	Jan-21	Feb-21	Mar-21	Apr-21	May-21	Jun-21	Jul-21	Aug-21
Month on month inflation rate	8.4	3.8	4.4	3.2	4.2	5.4	3.5	2.3	1.6	2.5	3.9	2.6	4.2

**Figure 1: Month on month inflation rate from August 2020 to August 2021**



# Consumer Price Index (February 2019=100)

	Food and non alcoholic beverages	Alcoholic beverages and tobacco	Clothing and footwear	Housing water electricity gas and other fuels	Furniture, household equipment and maintenance	Health	Transport	Communication	Recreation and culture	Education	Restaurants and hotels	Miscellaneous goods and services	All Items	Inflation Rate (%) <u>Monthly</u>	Inflation Rate (%) <u>Annual</u>
<b>Weights</b>	<b>31.3</b>	<b>4.9</b>	<b>4.3</b>	<b>27.6</b>	<b>5.3</b>	<b>1.4</b>	<b>8.4</b>	<b>2.7</b>	<b>2.3</b>	<b>4.3</b>	<b>1.1</b>	<b>6.5</b>	<b>100.0</b>		
<b>2019</b>	295.7	293.6	269.5	163.1	262.7	300.5	252.1	186.9	270.7	127.0	241.9	279.4	240.3		
<b>2020</b>	2,072.8	2,185.2	2,015.1	663.0	1,710.4	2,345.5	1,481.0	2,655.8	1,808.5	547.0	1,590.9	2,356.4	1,579.1		557.2
<b>2019 Jan Reb</b>	96.6	97.1	94.4	97.3	97.3	97.2	108.3	99.9	96.7	100.0	97.8	95.8	98.4	10.8	56.9
<b>Feb</b>	100.0	100.0	100.0	100.0	100.0	100.0	100.0	100.0	100.0	100.0	100.0	100.0	100.0	1.7	59.4
<b>Mar</b>	105.1	114.3	105.6	102.3	105.2	102.3	103.1	100.1	103.9	103.7	104.5	105.2	104.4	4.4	66.8
<b>Apr</b>	113.3	128.1	112.5	103.0	111.3	122.7	106.6	103.6	109.5	110.8	125.2	110.8	110.1	5.5	75.9
<b>May</b>	133.3	155.7	125.9	105.6	124.2	143.3	123.8	136.0	142.1	114.2	133.5	120.7	124.0	12.5	97.9
<b>Jun</b>	206.7	219.4	201.3	124.8	203.4	210.0	175.7	139.2	192.4	114.3	171.9	164.9	172.6	39.3	175.7
<b>Jul</b>	247.9	271.5	257.0	136.2	258.3	301.0	222.1	149.6	262.0	126.9	224.3	230.6	208.9	21.0	230.4
<b>Aug</b>	293.9	320.6	284.8	154.8	287.2	323.5	294.6	251.1	295.2	132.1	243.7	273.9	246.7	18.1	288.6
<b>Sep</b>	351.3	355.9	334.5	178.8	329.5	383.9	344.2	254.3	348.4	137.5	264.3	369.7	290.4	17.7	353.3
<b>Oct</b>	521.2	508.2	458.8	247.9	445.3	517.5	435.5	277.5	459.1	145.0	364.6	480.8	402.9	38.7	440.2
<b>Nov</b>	639.1	592.3	543.0	262.4	516.1	613.2	477.7	313.7	553.6	169.8	497.6	595.6	473.3	17.5	481.1
<b>Dec</b>	739.8	660.4	616.2	344.4	574.5	691.3	534.1	318.1	585.2	170.1	574.9	704.5	551.6	16.6	521.1
<b>2020 Jan Reb</b>	758.7	672.5	639.8	346.5	583.2	728.1	546.1	327.0	596.9	186.1	590.5	717.7	563.9	2.2	473.3
<b>Feb</b>	810.3	729.6	703.9	354.3	623.9	885.0	598.6	1,046.4	704.1	362.8	607.7	939.1	640.2	13.5	540.2
<b>Mar</b>	953.6	939.4	965.2	556.8	807.1	1,126.5	707.0	1,091.0	1,118.1	365.2	714.0	1,152.1	810.4	26.6	676.4
<b>Apr</b>	1,224.1	1,185.6	1,095.1	573.8	1,001.3	1,408.9	769.7	1,124.3	1,223.4	369.3	864.5	1,326.3	953.4	17.6	765.6
<b>May</b>	1,404.3	1,528.2	1,303.1	593.4	1,215.2	1,666.7	946.5	1,171.8	1,346.2	369.4	1,121.2	1,635.5	1,097.7	15.1	785.5
<b>Jun</b>	1,934.3	2,067.0	1,939.5	638.0	1,679.5	2,396.2	1,253.9	1,444.2	1,877.4	372.6	1,485.1	2,118.1	1,445.2	31.7	737.3
<b>Jul</b>	2,669.1	2,755.2	2,636.4	715.0	2,224.5	3,051.6	1,889.0	3,161.1	2,199.0	376.9	2,047.1	2,854.7	1,958.7	35.5	837.5
<b>Aug</b>	2,837.3	3,022.6	2,834.6	735.2	2,398.7	3,265.8	2,097.1	3,779.7	2,369.4	677.9	2,219.1	3,174.0	2,124.0	8.4	761.0
<b>Sep</b>	2,896.3	3,099.0	2,882.9	757.3	2,435.2	3,350.4	2,132.6	4,529.6	2,506.7	836.6	2,226.4	3,404.3	2,205.2	3.8	659.4
<b>Oct</b>	2,983.2	3,274.9	2,955.2	874.1	2,458.4	3,387.8	2,197.1	4,700.9	2,546.6	877.7	2,320.4	3,556.0	2,301.7	4.4	471.3
<b>Nov</b>	3,099.9	3,396.1	3,065.4	903.4	2,508.0	3,410.1	2,276.1	4,719.1	2,590.9	883.9	2,421.5	3,630.2	2,374.2	3.2	401.7
<b>Dec</b>	3,302.5	3,551.8	3,159.8	908.1	2,589.6	3,469.0	2,358.3	4,774.2	2,623.5	885.5	2,472.8	3,768.8	2,474.5	4.2	348.6
<b>2021 Jan</b>	3,561.4	3,709.2	3,196.3	952.0	2,676.4	3,749.3	2,449.6	4,808.2	2,668.6	886.0	2,682.4	3,944.7	2,608.8	5.4	362.6
<b>Feb</b>	3,718.9	3,830.5	3,226.4	982.6	2,723.6	3,842.4	2,553.0	4,808.5	2,655.0	887.1	2,734.6	4,134.6	2,698.9	3.5	321.6
<b>Mar</b>	3,812.5	3,886.0	3,244.6	998.4	2,763.0	3,983.8	2,586.7	5,052.9	2,686.3	891.9	2,830.2	4,264.4	2,759.8	2.3	240.6
<b>Apr</b>	3,875.6	3,925.7	3,299.9	1,009.9	2,791.9	4,022.0	2,610.5	5,054.4	2,708.3	1,036.6	2,929.1	4,336.8	2,803.6	1.6	194.1
<b>May</b>	3,912.6	4,004.7	3,341.0	1,019.6	2,941.3	4,139.0	2,662.4	5,072.2	3,226.4	1,036.6	3,636.3	4,608.3	2,874.8	2.5	161.9
<b>Jun</b>	4,038.0	4,115.4	3,442.9	1,118.6	3,069.5	4,271.1	2,752.8	5,152.0	3,286.7	1,094.7	3,703.2	4,796.8	2,986.4	3.9	106.6
<b>Jul</b>	4,139.4	4,254.6	3,518.9	1,141.1	3,194.1	4,467.5	2,804.1	5,155.5	3,355.5	1,101.1	3,876.1	4,965.7	3,062.9	2.6	56.4
<b>Aug</b>	4,269.3	4,492.4	3,696.8	1,170.1	3,374.6	4,753.0	2,938.1	5,547.9	3,458.0	1,105.1	4,069.5	5,280.7	3,191.2	4.2	50.2

	Weights															Change in % from Jul 2021 to Aug 2021	Change in % Aug 2020 to Aug 2021	
	Feb-19	Jul-20	Aug-20	Sep-20	Oct-20	Nov-20	Dec-20	Jan-21	Feb-21	Mar-21	Apr-21	May-21	Jun-21	Jul-21	Aug-21			
<b>FOOD &amp; NON ALCOHOLIC BEVERAGES</b>	<b>31.30</b>	<b>100.00</b>	<b>2669.10</b>	<b>2837.28</b>	<b>2896.30</b>	<b>2983.22</b>	<b>3099.92</b>	<b>3302.51</b>	<b>3561.35</b>	<b>3718.89</b>	<b>3812.52</b>	<b>3875.55</b>	<b>3912.56</b>	<b>4038.04</b>	<b>4139.44</b>	<b>4269.33</b>	<b>3.14</b>	<b>50.47</b>
<b>Food</b>	<b>30.34</b>	<b>100.00</b>	<b>2688.72</b>	<b>2856.64</b>	<b>2917.10</b>	<b>3004.80</b>	<b>3123.64</b>	<b>3326.54</b>	<b>3588.00</b>	<b>3745.47</b>	<b>3838.48</b>	<b>3902.57</b>	<b>3939.72</b>	<b>4066.02</b>	<b>4168.43</b>	<b>4296.76</b>	<b>3.08</b>	<b>50.41</b>
Bread and Cereals	8.72	100.00	2852.44	2986.82	3057.41	3178.37	3215.73	3348.95	3640.45	3838.38	3877.05	3935.43	3940.14	4054.09	4173.98	4310.40	3.27	44.31
Meat	5.79	100.00	2270.60	2446.82	2459.74	2535.10	2820.56	3081.53	3299.74	3369.63	3419.01	3470.71	3495.82	3616.07	3710.69	3890.42	4.84	59.00
Fish and sea food	1.26	100.00	1720.32	1878.45	1935.28	2048.46	2173.85	2279.66	2333.23	2431.88	2487.07	2499.71	2567.26	2615.16	2706.19	2779.58	2.71	47.97
Milk,Cheese,Eggs	1.62	100.00	2493.67	2680.62	2775.38	2874.98	3035.02	3246.76	3413.77	3484.01	3633.76	3739.21	3858.66	4011.94	4109.08	4261.22	3.70	58.96
Oils and fats	1.90	100.00	2362.48	2455.51	2505.52	2418.78	2444.55	2628.78	2878.74	2959.91	3074.12	3190.13	3251.53	3547.99	3613.30	3750.86	3.81	52.75
Fruit	1.15	100.00	2850.47	3188.37	3263.39	3495.47	3978.02	4367.73	4801.83	4911.64	5042.38	4824.33	4893.59	5082.13	5174.42	5522.17	6.72	73.20
Vegetables	7.81	100.00	2800.68	3000.93	3089.20	3176.53	3247.03	3510.27	3850.64	4105.70	4257.43	4363.67	4396.85	4472.38	4572.07	4579.97	0.17	52.62
Sugar,jam,honey,chocolate and confectionery	1.56	100.00	4165.67	4292.95	4305.52	4355.34	4379.97	4435.74	4517.73	4579.69	4774.38	4862.80	4989.37	5257.42	5388.49	5744.31	6.60	33.81
Food products n.e.c	0.51	100.00	2260.79	2395.56	2449.29	2453.39	2478.79	2597.92	2642.11	2714.66	2769.04	2790.04	2804.90	2886.03	2938.17	3021.80	2.85	26.14
<b>Non alcoholic beverages</b>	<b>0.97</b>	<b>100.00</b>	<b>2054.93</b>	<b>2231.13</b>	<b>2245.01</b>	<b>2307.62</b>	<b>2357.42</b>	<b>2550.06</b>	<b>2727.00</b>	<b>2886.67</b>	<b>2999.80</b>	<b>3029.69</b>	<b>3062.38</b>	<b>3162.26</b>	<b>3231.66</b>	<b>3410.37</b>	<b>5.53</b>	<b>52.85</b>
Coffee, tea and cocoa	0.22	100.00	2304.01	2641.39	2673.27	2712.73	2796.49	2913.86	3074.53	3201.55	3265.08	3269.97	3302.34	3352.24	3420.79	3636.44	6.30	37.67
Mineral waters, soft drinks, fruit and vegetable juices	0.75	100.00	1983.68	2113.78	2122.50	2191.74	2231.82	2446.00	2627.59	2796.60	2923.92	2960.96	2993.74	3107.91	3177.56	3345.70	5.29	58.28
<b>ALCOHOLIC BEVERAGES &amp; TOBACCO</b>	<b>4.90</b>	<b>100.00</b>	<b>2755.17</b>	<b>3022.65</b>	<b>3099.01</b>	<b>3274.91</b>	<b>3396.06</b>	<b>3551.76</b>	<b>3709.23</b>	<b>3830.53</b>	<b>3886.01</b>	<b>3925.73</b>	<b>4004.74</b>	<b>4115.41</b>	<b>4254.60</b>	<b>4492.38</b>	<b>5.59</b>	<b>48.62</b>
<b>Alcoholic beverages</b>	<b>3.45</b>	<b>100.00</b>	<b>3220.02</b>	<b>3529.60</b>	<b>3608.53</b>	<b>3837.74</b>	<b>3980.86</b>	<b>4162.42</b>	<b>4362.52</b>	<b>4526.68</b>	<b>4592.73</b>	<b>4629.47</b>	<b>4730.92</b>	<b>4859.18</b>	<b>4966.35</b>	<b>5229.50</b>	<b>5.30</b>	<b>48.16</b>
Spirits	0.75	100.00	3139.61	3388.86	3520.84	3721.01	3894.12	4073.95	4451.68	4537.16	4643.32	4727.70	4839.09	5006.93	5081.49	5343.64	5.16	57.68
Wine	0.72	100.00	3474.94	3620.92	3703.45	3756.43	3825.86	4080.23	4325.05	4462.94	4588.67	4650.09	4818.73	4948.75	5035.56	5130.12	1.88	41.68
Beer	1.98	100.00	3158.14	3550.05	3607.48	3911.69	4070.13	4225.93	4342.17	4545.83	4574.95	4584.58	4657.86	4770.42	4897.39	5222.10	6.63	47.10
<b>Tobacco</b>	<b>1.45</b>	<b>100.00</b>	<b>1653.44</b>	<b>1821.14</b>	<b>1891.40</b>	<b>1940.97</b>	<b>2010.06</b>	<b>2104.47</b>	<b>2160.90</b>	<b>2180.60</b>	<b>2211.05</b>	<b>2257.83</b>	<b>2283.67</b>	<b>2352.62</b>	<b>2567.71</b>	<b>2745.36</b>	<b>6.92</b>	<b>50.75</b>
Tobacco	1.45	100.00	1653.44	1821.14	1891.40	1940.97	2010.06	2104.47	2160.90	2180.60	2211.05	2257.83	2283.67	2352.62	2567.71	2745.36	6.92	50.75
<b>CLOTHING &amp; FOOTWEAR</b>	<b>4.35</b>	<b>100.00</b>	<b>2636.41</b>	<b>2834.56</b>	<b>2882.94</b>	<b>2955.18</b>	<b>3065.40</b>	<b>3159.83</b>	<b>3196.26</b>	<b>3226.37</b>	<b>3244.63</b>	<b>3299.88</b>	<b>3341.02</b>	<b>3442.92</b>	<b>3518.89</b>	<b>3695.71</b>	<b>5.02</b>	<b>30.38</b>
<b>Clothing</b>	<b>3.41</b>	<b>100.00</b>	<b>2510.13</b>	<b>2694.21</b>	<b>2745.88</b>	<b>2819.55</b>	<b>2947.63</b>	<b>3059.38</b>	<b>3085.25</b>	<b>3104.23</b>	<b>3121.92</b>	<b>3180.16</b>	<b>3227.91</b>	<b>3342.50</b>	<b>3425.92</b>	<b>3610.22</b>	<b>5.38</b>	<b>34.00</b>
Clothing materials	0.08	100.00	1961.76	2093.67	2110.31	2239.82	2282.81	2310.64	2354.21	2435.96	2426.97	2478.95	2484.80	2535.50	2552.75	2692.06	5.46	28.58
Garments	2.57	100.00	2852.71	3068.15	3130.84	3212.40	3366.31	3494.13	3520.98	3539.06	3564.07	3624.18	3679.49	3795.53	3893.57	4095.71	5.19	33.49
Other articles of clothing and clothing accessories	0.34	100.00	1883.51	2019.51	2048.15	2109.47	2174.91	2238.54	2277.76	2301.46	2276.08	2334.25	2337.21	2450.87	2476.90	2629.80	6.17	30.22
Cleaning, repair and hire of clothing	0.21	100.00	1715.50	1796.31	1815.07	1863.39	1939.19	2078.19	2089.05	2104.93	2132.61	2225.54	2319.50	2551.68	2637.81	2846.06	7.89	58.44
Second hand clothing	0.21	100.00	375.21	379.39	380.98	381.58	383.69	386.38	386.38	386.38	386.38	391.05	392.08	402.39	425.75	440.19	3.39	16.03
<b>Footwear</b>	<b>0.93</b>	<b>100.00</b>	<b>3098.79</b>	<b>3348.42</b>	<b>3384.71</b>	<b>3451.74</b>	<b>3496.55</b>	<b>3527.60</b>	<b>3602.67</b>	<b>3673.55</b>	<b>3693.92</b>	<b>3738.21</b>	<b>3755.14</b>	<b>3810.58</b>	<b>3859.30</b>	<b>4008.73</b>	<b>3.87</b>	<b>19.72</b>
Shoes and other footwear	0.76	100.00	3383.09	3655.94	3677.30	3745.83	3784.42	3815.81	3902.34	3953.13	3967.90	4017.64	4035.76	4076.38	4127.88	4250.42	2.97	16.26
Repair and hire of footwear	0.17	100.00	1852.45	2000.31	2102.06	2162.54	2234.61	2264.16	2288.98	2447.97	2492.86	2513.23	2524.95	2645.40	2681.92	2949.23	9.97	47.44
<b>HOUSING, WATER, ELECTRICITY, GAS &amp; Actual rentals for housing</b>	<b>27.62</b>	<b>100.00</b>	<b>715.02</b>	<b>735.20</b>	<b>757.31</b>	<b>874.12</b>	<b>903.43</b>	<b>908.10</b>	<b>952.02</b>	<b>982.58</b>	<b>998.42</b>	<b>1009.85</b>	<b>1019.60</b>	<b>1118.61</b>	<b>1141.14</b>	<b>1170.09</b>	<b>2.54</b>	<b>59.15</b>
Actual rentals for housing	19.83	100.00	487.90	487.90	487.90	487.90	520.27	520.27	525.47	525.47	532.76	536.24	542.48	567.75	577.71	598.76	3.64	22.72
Maintenance and repair of the dwelling	0.18	100.00	2703.80	2825.36	2893.28	2977.10	2981.67	3179.87	3425.62	3535.24	3601.68	3715.46	3828.42	4007.47	4292.47	4604.30	7.26	62.96
Materials for the maintenance and repair of the dwelling	0.18	100.00	2703.80	2825.36	2893.28	2977.10	2981.67	3179.87	3425.62	3535.24	3601.68	3715.46	3828.42	4007.47	4292.47	4604.30	7.26	62.96
<b>Water supply and miscellaneous services</b>	<b>1.89</b>	<b>100.00</b>	<b>743.27</b>	<b>751.41</b>	<b>800.51</b>	<b>820.69</b>	<b>927.42</b>	<b>961.33</b>	<b>1021.07</b>	<b>1183.77</b>	<b>1250.53</b>	<b>1250.78</b>	<b>1252.36</b>	<b>1255.05</b>	<b>1257.69</b>	<b>1259.83</b>	<b>0.17</b>	<b>67.66</b>
Water Supply	1.37	100.00	677.69	680.08	684.86	698.44	743.47	743.47	789.67	895.31	922.94	923.64	924.53	926.22	928.33	929.64	0.14	36.70
Refuse collection	0.07	100.00	523.95	530.41	545.99	565.71	656.83	663.27	704.40	827.12	827.35	814.35	828.13	838.92	840.20	840.83	0.07	58.52
Sewerage collection	0.14	100.00	558.10	582.27	614.00	621.12	672.89	709.58	768.67	876.16	903.73	895.81	897.28	905.66	906.55	911.62	0.56	56.56
Other services relating to the dwelling n.e.c (owners rates)	0.30	100.00	1178.91	1205.96	1471.69	1528.01	1943.36	2135.98	2261.70	2718.00	2995.97	3001.13	3003.00	3005.65	3011.84	3016.68	0.16	150.15
<b>Electricity, gas and other fuels</b>	<b>5.73</b>	<b>100.00</b>	<b>1430.82</b>	<b>1521.73</b>	<b>1610.08</b>	<b>2164.18</b>	<b>2158.11</b>	<b>2163.31</b>	<b>2329.85</b>	<b>2420.17</b>	<b>2447.27</b>	<b>2486.79</b>	<b>2508.18</b>	<b>2891.82</b>	<b>2956.37</b>	<b>3012.80</b>	<b>1.91</b>	<b>97.99</b>

Electricity	2.95	100.00	818.82	818.82	818.82	1843.51	1841.05	1841.04	2080.93	2080.93	2080.93	2080.93	2089.03	2528.16	2528.43	2527.23	-0.05	208.64
Gas	0.40	100.00	3362.17	3468.82	3545.12	3816.06	3695.40	3744.09	3950.79	4016.17	3906.50	3895.53	3903.03	5145.81	5222.75	5557.96	6.42	60.23
Liquid fuels	0.17	100.00	1492.02	1561.42	1577.68	1802.09	1804.06	1856.33	1872.59	1863.92	1889.72	1904.51	1915.27	1920.10	1928.07		0.41	23.48
Solid fuels	2.20	100.00	1892.09	2103.70	2318.36	2318.97	2328.47	2329.03	2402.74	2624.53	2715.89	2818.76	2861.03	3041.41	3194.54	3280.82	2.70	55.95
<b>FURNITURE AND EQUIPMENT</b>	<b>5.29</b>	<b>100.00</b>	<b>2224.54</b>	<b>2398.66</b>	<b>2435.22</b>	<b>2458.36</b>	<b>2507.96</b>	<b>2589.61</b>	<b>2676.36</b>	<b>2723.64</b>	<b>2763.04</b>	<b>2791.86</b>	<b>2941.32</b>	<b>3069.51</b>	<b>3194.09</b>	<b>3374.60</b>	<b>5.65</b>	<b>40.69</b>
<b>FURNISH, HSE EQUIP &amp; ROUTINE MAINT</b>	<b>0.89</b>	<b>100.00</b>	<b>3488.03</b>	<b>3803.78</b>	<b>3860.34</b>	<b>3891.43</b>	<b>4054.67</b>	<b>4272.42</b>	<b>4324.84</b>	<b>4358.77</b>	<b>4383.95</b>	<b>4438.95</b>	<b>5129.38</b>	<b>5275.14</b>	<b>5691.48</b>	<b>6125.85</b>	<b>7.63</b>	<b>61.05</b>
Furniture and furnishings, carpets and other floor coverings	0.89	100.00	3488.03	3803.78	3860.34	3891.43	4054.67	4272.42	4324.84	4358.77	4383.95	4438.95	5129.38	5275.14	5691.48	6125.85	7.63	61.05
<b>Household textiles</b>	<b>0.45</b>	<b>100.00</b>	<b>1581.89</b>	<b>1652.22</b>	<b>1665.39</b>	<b>1681.36</b>	<b>1720.15</b>	<b>1749.31</b>	<b>1899.41</b>	<b>1901.43</b>	<b>1909.58</b>	<b>1920.56</b>	<b>2042.83</b>	<b>2075.42</b>	<b>2116.99</b>	<b>2181.27</b>	<b>3.04</b>	<b>32.02</b>
Household textiles	0.45	100.00	1581.89	1652.22	1665.39	1681.36	1720.15	1749.31	1899.41	1901.43	1909.58	1920.56	2042.83	2075.42	2116.99	2181.27	3.04	32.02
<b>Household appliances</b>	<b>0.36</b>	<b>100.00</b>	<b>2269.65</b>	<b>2381.85</b>	<b>2430.23</b>	<b>2437.27</b>	<b>2489.73</b>	<b>2577.26</b>	<b>2668.27</b>	<b>2682.03</b>	<b>2707.01</b>	<b>2739.26</b>	<b>2776.20</b>	<b>2818.67</b>	<b>2974.25</b>	<b>3069.74</b>	<b>3.21</b>	<b>28.88</b>
Major household appliances whether electric or not	0.36	100.00	2269.65	2381.85	2430.23	2437.27	2489.73	2577.26	2668.27	2682.03	2707.01	2739.26	2776.20	2818.67	2974.25	3069.74	3.21	28.88
<b>Glassware, tableware and household utensils</b>	<b>0.06</b>	<b>100.00</b>	<b>2436.28</b>	<b>2699.87</b>	<b>2773.58</b>	<b>3032.99</b>	<b>3090.95</b>	<b>3459.76</b>	<b>3717.62</b>	<b>3748.77</b>	<b>3792.28</b>	<b>3737.83</b>	<b>3767.52</b>	<b>3885.67</b>	<b>3971.73</b>	<b>4179.24</b>	<b>5.22</b>	<b>54.79</b>
Glassware,tableware,household utensils	0.06	100.00	2436.28	2699.87	2773.58	3032.99	3090.95	3459.76	3717.62	3748.77	3792.28	3737.83	3767.52	3885.67	3971.73	4179.24	5.22	54.79
<b>Tools and equipment for house and garden</b>	<b>0.41</b>	<b>100.00</b>	<b>2416.81</b>	<b>2548.45</b>	<b>2592.44</b>	<b>2737.77</b>	<b>2793.45</b>	<b>2873.66</b>	<b>3058.82</b>	<b>3090.09</b>	<b>3129.81</b>	<b>3160.99</b>	<b>3217.40</b>	<b>3362.29</b>	<b>3436.16</b>	<b>3608.15</b>	<b>5.01</b>	<b>41.58</b>
Major tools and equipment	0.38	100.00	2355.87	2478.12	2517.64	2669.64	2725.65	2791.40	2974.38	3000.55	3037.71	3061.58	3120.28	3273.62	3339.06	3504.77	4.96	41.43
Small tools and miscellaneous accessories	0.03	100.00	3198.87	3450.83	3552.30	3612.12	3663.51	3929.19	4142.31	4239.11	4311.56	4436.60	4463.67	4500.05	4682.21	4934.81	5.39	43.00
<b>Goods and services for routine household</b>	<b>3.12</b>	<b>100.00</b>	<b>1923.34</b>	<b>2083.02</b>	<b>2114.22</b>	<b>2117.21</b>	<b>2134.73</b>	<b>2179.05</b>	<b>2249.59</b>	<b>2313.46</b>	<b>2362.94</b>	<b>2387.86</b>	<b>2414.69</b>	<b>2559.50</b>	<b>2616.95</b>	<b>2752.28</b>	<b>5.17</b>	<b>32.13</b>
Non durable household goods	2.39	100.00	2395.57	2603.75	2644.42	2648.31	2668.88	2726.65	2818.61	2901.88	2964.98	2996.22	3030.03	3214.40	3286.78	3457.21	5.19	32.78
Domestic Services and household service	0.73	100.00	368.34	368.34	368.34	368.34	375.89	375.89	375.89	375.89	380.52	384.61	388.47	402.99	411.29	431.07	4.81	17.03
<b>HEALTH</b>	<b>1.42</b>	<b>100.00</b>	<b>3051.62</b>	<b>3265.80</b>	<b>3350.40</b>	<b>3387.81</b>	<b>3410.08</b>	<b>3468.98</b>	<b>3749.27</b>	<b>3842.40</b>	<b>3983.84</b>	<b>4022.00</b>	<b>4138.96</b>	<b>4271.09</b>	<b>4467.55</b>	<b>4753.36</b>	<b>6.40</b>	<b>45.55</b>
<b>Products and services and medical equipment</b>	<b>0.59</b>	<b>100.00</b>	<b>4940.89</b>	<b>5230.86</b>	<b>5300.54</b>	<b>5367.20</b>	<b>5375.97</b>	<b>5410.29</b>	<b>5834.98</b>	<b>5928.68</b>	<b>6126.36</b>	<b>6118.23</b>	<b>6313.42</b>	<b>6461.30</b>	<b>6686.87</b>	<b>7229.25</b>	<b>8.11</b>	<b>38.20</b>
pharmaceutical products	0.59	100.00	4940.89	5230.86	5300.54	5367.20	5375.97	5410.29	5834.98	5928.68	6126.36	6118.23	6313.42	6461.30	6686.87	7229.25	8.11	38.20
<b>Outpatient services</b>	<b>0.82</b>	<b>100.00</b>	<b>1758.42</b>	<b>1922.40</b>	<b>2019.68</b>	<b>2035.80</b>	<b>2065.15</b>	<b>2143.05</b>	<b>2325.57</b>	<b>2420.49</b>	<b>2524.80</b>	<b>2596.95</b>	<b>2660.33</b>	<b>2783.67</b>	<b>2963.06</b>	<b>3071.42</b>	<b>3.66</b>	<b>59.77</b>
Medical Services	0.59	100.00	1521.37	1672.00	1749.84	1770.76	1797.58	1900.09	2095.48	2217.66	2310.06	2406.42	2440.45	2499.91	2606.56	2753.22	5.63	64.67
Medical 'Dental services	0.02	100.00	1228.34	1362.71	1389.12	1407.20	1607.93	1635.75	1654.07	1729.66	1740.93	1762.71	1763.10	1787.35	1791.11	1810.32	1.07	32.85
Para-medical services	0.21	100.00	2494.64	2700.02	2860.95	2863.20	2879.37	2893.32	3058.83	3078.64	3227.86	3237.24	3391.46	3707.97	4114.84	4125.05	0.25	52.78
<b>Hospital services</b>	<b>0.02</b>	<b>100.00</b>	<b>577.60</b>	<b>622.51</b>	<b>622.51</b>	<b>674.68</b>	<b>805.40</b>	<b>805.40</b>	<b>851.67</b>	<b>851.67</b>	<b>861.76</b>	<b>863.82</b>	<b>879.43</b>	<b>907.26</b>	<b>944.94</b>	<b>972.08</b>	<b>2.87</b>	<b>56.15</b>
Hospital services	0.02	100.00	577.60	622.51	622.51	674.68	805.40	805.40	851.67	851.67	861.76	863.82	879.43	907.26	944.94	972.08	2.87	56.15
<b>TRANSPORT</b>	<b>8.39</b>	<b>100.00</b>	<b>1889.01</b>	<b>2097.13</b>	<b>2132.57</b>	<b>2197.08</b>	<b>2276.12</b>	<b>2358.30</b>	<b>2449.58</b>	<b>2553.01</b>	<b>2586.70</b>	<b>2610.47</b>	<b>2662.39</b>	<b>2752.77</b>	<b>2804.09</b>	<b>2938.01</b>	<b>4.78</b>	<b>40.10</b>
<b>Purchase of vehicles</b>	<b>0.59</b>	<b>100.00</b>	<b>4254.81</b>	<b>4838.50</b>	<b>4850.40</b>	<b>4883.06</b>	<b>5469.02</b>	<b>5517.29</b>	<b>5940.47</b>	<b>6011.53</b>	<b>6017.40</b>	<b>5500.47</b>	<b>5783.34</b>	<b>5929.72</b>	<b>6052.37</b>	<b>6231.65</b>	<b>2.96</b>	<b>28.79</b>
Motor cars	0.39	100.00	4538.58	5259.81	5266.03	5302.74	6167.49	6169.13	6818.34	6848.06	6844.00	6001.56	6428.77	6611.09	6766.88	6853.94	1.29	30.31
Motor cycles	0.03	100.00	11447.53	11458.76	11468.23	11468.23	11468.23	11468.23	11468.23	12303.95	12357.47	12518.06	12518.06	12518.06	12518.06	14189.49	13.35	23.83
Bicycles	0.14	100.00	2510.74	2895.81	2918.98	2947.79	3036.30	3232.95	3232.95	3236.47	3251.93	3321.35	3329.53	3440.18	3526.25	3629.63	2.93	25.34
Animal drawn vehicles	0.04	100.00	1422.14	1811.28	1842.62	1875.99	1912.37	1945.84	1949.70	2024.14	2055.47	2166.30	2208.15	2243.31	2265.75	2369.51	4.58	30.82
<b>Operational of personal transport equipment</b>	<b>6.50</b>	<b>100.00</b>	<b>1875.69</b>	<b>2088.84</b>	<b>2132.83</b>	<b>2212.23</b>	<b>2260.60</b>	<b>2360.34</b>	<b>2438.52</b>	<b>2549.28</b>	<b>2591.14</b>	<b>2665.74</b>	<b>2706.39</b>	<b>2806.92</b>	<b>2855.99</b>	<b>3008.79</b>	<b>5.35</b>	<b>44.04</b>
Spare parts and accessories for personal transport equipment	0.61	100.00	4872.22	5300.42	5510.85	5888.43	5993.93	6261.79	6396.55	6408.68	6436.73	6577.36	6632.49	6730.64	6918.53	7202.83	4.11	35.89
Fuels and lubricants for personal transport equipment	5.89	100.00	1564.93	1755.78	1782.51	1830.99	1873.43	1955.74	2028.05	2149.04	2192.33	2260.08	2299.23	2400.01	2434.67	2573.84	5.72	46.59
<b>Transport Services</b>	<b>1.30</b>	<b>100.00</b>	<b>873.78</b>	<b>884.94</b>	<b>888.40</b>	<b>892.90</b>	<b>893.68</b>	<b>903.47</b>	<b>908.53</b>	<b>990.05</b>	<b>995.57</b>	<b>1012.22</b>	<b>1014.85</b>	<b>1028.89</b>	<b>1058.84</b>	<b>1077.45</b>	<b>1.76</b>	<b>21.75</b>
Passenger tran	1.30	100.00	873.78	884.94	888.40	892.90	893.68	903.47	908.53	990.05	995.57	1012.22	1014.85	1028.89	1058.84	1077.45	1.76	21.75
<b>COMMUNICATION</b>	<b>2.65</b>	<b>100.00</b>	<b>3161.12</b>	<b>3779.68</b>	<b>4529.57</b>	<b>4700.94</b>	<b>4719.10</b>	<b>4774.19</b>	<b>4808.22</b>	<b>4808.49</b>	<b>5052.90</b>	<b>5054.38</b>	<b>5072.16</b>	<b>5151.98</b>	<b>5155.52</b>	<b>5547.85</b>	<b>7.61</b>	<b>46.78</b>
<b>Postal Services</b>	<b>0.01</b>	<b>100.00</b>	<b>9167.49</b>	<b>19780.59</b>	<b>19780.59</b>	<b>20451.04</b>	<b>20451.04</b>	<b>20712.17</b>	<b>20712.17</b>	<b>20712.17</b>	<b>20712.17</b>	<b>20712.17</b>	<b>20712.17</b>	<b>20712.17</b>	<b>20717.19</b>	<b>20717.19</b>	<b>0.00</b>	<b>4.73</b>
POSTAL SERVICE	0.01	100.00	9167.49	19780.59	19780.59	20451.04	20451.04	20712.17	20712.17	20712.17	20712.17	20712.17	20712.17	20712.17	20717.19	20717.19	0.00	4.73
<b>Telephone and telefax equipment and tele</b>	<b>0.35</b>	<b>100.00</b>	<b>1501.31</b>	<b>1668.74</b>	<b>1826.56</b>	<b>2664.70</b>	<b>2800.61</b>	<b>2859.13</b>	<b>2859.45</b>	<b>2861.34</b>	<b>2861.76</b>	<b>2867.18</b>	<b>2995.63</b>	<b>3575.90</b>	<b>3580.37</b>	<b>3605.78</b>	<b>0.71</b>	<b>116.08</b>
Telephone and telefax equipments	0.35	100.00	1501.31	1668.74	1826.56	2664.70	2800.61	2859.13	2859.45	2861.34	2861.76	2867.18	2995.63	3575.90	3580.37	3605.78	0.71	116.08
<b>Telephone and telefax services</b>	<b>2.29</b>	<b>100.00</b>	<b>3388.94</b>	<b>4028.47</b>	<b>4873.78</b>	<b>4939.37</b>	<b>4939.37</b>	<b>4992.93</b>	<b>5032.35</b>	<b>5032.36</b>	<b>5315.79</b>	<b>5316.66</b>	<b>5317.37</b>	<b>5320.04</b>	<b>5323.42</b>	<b>5774.54</b>	<b>8.47</b>	<b>43.34</b>
Telephone and telefax services	2.29	100.00	3388.94	4028.47	4873.78	4939.37	4939.37	4992.93	5032.35	5032.36	5315.79	5316.66	5317.37	5320.04	5323.42	5774.54	8.47	43.34
<b>RECREATION AND CULTURE</b>	<b>2.27</b>	<b>100.00</b>	<b>2199.01</b>	<b>2369.43</b>	<b>2506.66</b>	<b>2546.59</b>	<b>2590.87</b>	<b>2623.45</b>	<b>2668.64</b>	<b>2655.04</b>	<b>2686.34</b>	<b>2708.32</b>	<b>3226.38</b>	<b>3286.74</b>	<b>3355.49</b>	<b>3454.14</b>	<b>2.94</b>	<b>45.78</b>

<b>Audio visual, photographic and informatio</b>	<b>0.36</b>	<b>100.00</b>	<b>1625.52</b>	<b>1667.75</b>	<b>1706.71</b>	<b>1741.43</b>	<b>1814.15</b>	<b>1857.89</b>	<b>1862.32</b>	<b>1863.07</b>	<b>1875.25</b>	<b>1907.24</b>	<b>1945.75</b>	<b>2017.96</b>	<b>2089.87</b>	<b>2251.39</b>	<b>7.73</b>	<b>35.00</b>	
Equipment for reception,recording and reproduction of so	0.20	100.00	1868.00	1896.33	1962.49	2002.26	2115.55	2149.01	2150.73	2151.98	2160.53	2151.46	2195.58	2226.69	2304.12	2534.19	9.99	33.64	
Photographic	0.03	100.00	182.69	186.87	186.87	186.87	186.87	186.87	186.87	186.87	186.87	186.87	186.88	188.88	188.88	189.54	0.35	1.43	
Information	0.05	100.00	1558.91	1627.83	1635.70	1674.81	1719.21	1836.58	1836.58	1836.53	1905.26	2025.87	2112.84	2321.22	2325.02	2396.52	3.08	47.22	
Recording med	0.09	100.00	1592.71	1666.06	1671.78	1704.36	1722.91	1766.40	1781.00	1781.25	1776.04	1867.21	1880.17	1999.52	2119.37	2224.79	4.97	33.54	
<b>Other recreational items and equipment,g:</b>	<b>0.56</b>	<b>100.00</b>	<b>2297.85</b>	<b>2407.74</b>	<b>2437.04</b>	<b>2473.43</b>	<b>2573.07</b>	<b>2626.04</b>	<b>2702.49</b>	<b>2762.33</b>	<b>2787.39</b>	<b>2851.13</b>	<b>2908.86</b>	<b>2972.58</b>	<b>3049.29</b>	<b>3107.51</b>	<b>1.91</b>	<b>29.06</b>	
Equipmentsport	0.07	100.00	1813.74	2010.01	2021.38	2070.72	2149.02	2226.00	2310.99	2310.98	2366.48	2361.92	2421.36	2443.87	2487.84	2660.65	6.95	32.37	
Gardensplants	0.40	100.00	2517.45	2609.49	2647.01	2681.23	2790.18	2831.03	2920.39	2976.27	3005.26	3079.15	3141.55	3203.31	3290.87	3330.73	1.21	27.64	
Pet and related products	0.08	100.00	1664.60	1785.98	1791.37	1827.11	1900.52	1990.76	1998.52	2128.16	2108.54	2182.15	2216.17	2324.33	2377.27	2425.38	2.02	35.80	
<b>Recreational and cultural services</b>	<b>0.52</b>	<b>100.00</b>	<b>2814.87</b>	<b>2918.33</b>	<b>3368.29</b>	<b>3357.37</b>	<b>3358.92</b>	<b>3359.73</b>	<b>3366.56</b>	<b>3191.97</b>	<b>3198.05</b>	<b>3198.25</b>	<b>5262.58</b>	<b>5268.47</b>	<b>5288.47</b>	<b>5353.40</b>	<b>1.23</b>	<b>83.44</b>	
Recreational sporting services	0.06	100.00	3427.37	4281.41	4520.87	4430.04	4442.38	4449.06	4505.53	4549.55	4599.84	4600.98	4660.43	4709.13	4721.50	4744.62	0.49	10.82	
Cultural Serv	0.46	100.00	2730.58	2730.73	3209.66	3209.74	3209.81	3209.81	3209.81	3005.13	3005.13	3005.19	5345.45	5345.45	5366.50	5437.19	1.32	99.11	
<b>Newspapers, books and stationery</b>	<b>0.83</b>	<b>100.00</b>	<b>1995.49</b>	<b>2305.02</b>	<b>2361.18</b>	<b>2437.78</b>	<b>2459.17</b>	<b>2493.11</b>	<b>2559.20</b>	<b>2591.13</b>	<b>2650.88</b>	<b>2654.03</b>	<b>2718.95</b>	<b>2806.14</b>	<b>2898.83</b>	<b>3018.47</b>	<b>4.13</b>	<b>30.95</b>	
Books	0.24	100.00	1765.75	1916.34	2028.28	2084.07	2105.93	2219.71	2308.37	2312.48	2312.66	2314.32	2360.31	2385.85	2436.85	2604.83	6.89	35.93	
Newspapers	0.06	100.00	3338.62	4530.09	4534.60	5068.85	5077.51	5080.96	5081.26	5081.39	6154.71	6154.45	6159.23	6544.43	6544.43	6471.03	-1.12	42.85	
Stationery	0.53	100.00	1954.02	2239.97	2276.55	2313.12	2335.67	2336.91	2399.92	2447.83	2424.98	2429.17	2509.12	2591.92	2713.42	2832.11	4.37	26.43	
<b>EDUCATION</b>	<b>4.25</b>	<b>100.00</b>	<b>376.88</b>	<b>677.87</b>	<b>836.63</b>	<b>877.67</b>	<b>883.91</b>	<b>885.52</b>	<b>886.02</b>	<b>887.14</b>	<b>891.89</b>	<b>1036.58</b>	<b>1036.58</b>	<b>1094.68</b>	<b>1101.11</b>	<b>1105.13</b>	<b>0.36</b>	<b>63.03</b>	
<b>Pre-primary and primary education</b>	<b>1.35</b>	<b>100.00</b>	<b>163.94</b>	<b>163.94</b>	<b>163.94</b>	<b>163.94</b>	<b>167.74</b>	<b>167.74</b>	<b>167.74</b>	<b>167.74</b>	<b>167.74</b>	<b>167.74</b>	<b>198.54</b>	<b>198.54</b>	<b>198.54</b>	<b>198.54</b>	<b>0.00</b>	<b>21.11</b>	
Pre-primary and primary education	1.35	100.00	163.94	163.94	163.94	163.94	167.74	167.74	167.74	167.74	167.74	167.74	198.54	198.54	198.54	198.54	0.00	21.11	
<b>Secondary education</b>	<b>1.35</b>	<b>100.00</b>	<b>172.81</b>	<b>172.81</b>	<b>174.00</b>	<b>174.00</b>	<b>178.03</b>	<b>178.03</b>	<b>178.03</b>	<b>178.03</b>	<b>178.03</b>	<b>178.03</b>	<b>209.26</b>	<b>209.26</b>	<b>209.26</b>	<b>209.26</b>	<b>0.00</b>	<b>21.09</b>	
Secondary Education	1.35	100.00	172.81	172.81	174.00	174.00	178.03	178.03	178.03	178.03	178.03	178.03	209.26	209.26	209.26	209.26	0.00	21.09	
<b>Private college Education</b>	<b>0.08</b>	<b>100.00</b>	<b>1198.16</b>	<b>1217.35</b>	<b>1247.64</b>	<b>1501.35</b>	<b>1697.28</b>	<b>1698.92</b>	<b>1725.25</b>	<b>1783.45</b>	<b>1773.91</b>	<b>1898.77</b>	<b>1898.77</b>	<b>1988.80</b>	<b>2052.15</b>	<b>2239.44</b>	<b>9.13</b>	<b>83.96</b>	
Private college fees	0.08	100.00	1198.16	1217.35	1247.64	1501.35	1697.28	1698.92	1725.25	1783.45	1773.91	1898.77	1898.77	1988.80	2052.15	2239.44	9.13	83.96	
<b>University Education</b>	<b>1.35</b>	<b>100.00</b>	<b>611.07</b>	<b>1559.39</b>	<b>2058.02</b>	<b>2172.12</b>	<b>2172.12</b>	<b>2177.08</b>	<b>2177.08</b>	<b>2177.08</b>	<b>2192.66</b>	<b>2579.50</b>	<b>2579.50</b>	<b>2757.34</b>	<b>2773.78</b>	<b>2775.12</b>	<b>0.05</b>	<b>77.96</b>	
University fees	1.35	100.00	611.07	1559.39	2058.02	2172.12	2172.12	2177.08	2177.08	2177.08	2192.66	2579.50	2579.50	2757.34	2773.78	2775.12	0.05	77.96	
<b>Correspondence fees</b>	<b>0.13</b>	<b>100.00</b>	<b>1792.81</b>	<b>1792.81</b>	<b>1783.87</b>	<b>1783.87</b>	<b>1783.87</b>	<b>1783.87</b>	<b>1783.87</b>	<b>1783.87</b>	<b>1783.87</b>	<b>1783.87</b>	<b>1783.87</b>	<b>1783.87</b>	<b>1783.87</b>	<b>1783.87</b>	<b>0.00</b>	<b>-0.50</b>	
Correspondence fees	0.13	100.00	1792.81	1792.81	1783.87	1783.87	1783.87	1783.87	1783.87	1783.87	1783.87	1783.87	1783.87	1783.87	1783.87	1783.87	0.00	-0.50	
<b>RESTAURANTS AND HOTELS</b>	<b>1.08</b>	<b>100.00</b>	<b>2047.09</b>	<b>2219.12</b>	<b>2226.41</b>	<b>2320.43</b>	<b>2421.49</b>	<b>2472.76</b>	<b>2682.42</b>	<b>2734.58</b>	<b>2830.18</b>	<b>2929.08</b>	<b>3636.27</b>	<b>3703.16</b>	<b>3876.08</b>	<b>4069.51</b>	<b>4.99</b>	<b>83.38</b>	
<b>Catering Services</b>	<b>0.54</b>	<b>100.00</b>	<b>3397.80</b>	<b>3693.63</b>	<b>3698.04</b>	<b>3857.13</b>	<b>4033.52</b>	<b>4090.96</b>	<b>4485.70</b>	<b>4582.45</b>	<b>4743.05</b>	<b>4914.19</b>	<b>5992.98</b>	<b>6073.69</b>	<b>6364.71</b>	<b>6676.32</b>	<b>4.90</b>	<b>80.75</b>	
Restaurants, cafes and the like	0.54	100.00	3397.80	3693.63	3698.04	3857.13	4033.52	4090.96	4485.70	4582.45	4743.05	4914.19	5992.98	6073.69	6364.71	6676.32	4.90	80.75	
<b>Accommodation services</b>	<b>0.54</b>	<b>100.00</b>	<b>684.51</b>	<b>731.66</b>	<b>741.85</b>	<b>770.23</b>	<b>795.30</b>	<b>840.34</b>	<b>863.30</b>	<b>870.47</b>	<b>900.50</b>	<b>926.52</b>	<b>1258.86</b>	<b>1311.79</b>	<b>1365.58</b>	<b>1439.79</b>	<b>5.43</b>	<b>96.78</b>	
Accommodation services	0.54	100.00	684.51	731.66	741.85	770.23	795.30	840.34	863.30	870.47	900.50	926.52	1258.86	1311.79	1365.58	1439.79	5.43	96.78	
<b>MISCELLANEOUS GOODS AND SERVICE:</b>	<b>6.46</b>	<b>100.00</b>	<b>2854.66</b>	<b>3174.02</b>	<b>3404.35</b>	<b>3556.03</b>	<b>3630.25</b>	<b>3768.80</b>	<b>3944.66</b>	<b>4134.57</b>	<b>4264.35</b>	<b>4336.75</b>	<b>4608.26</b>	<b>4796.79</b>	<b>4965.74</b>	<b>5280.67</b>	<b>6.34</b>	<b>66.37</b>	
<b>Personal Care</b>	<b>2.86</b>	<b>100.00</b>	<b>2372.10</b>	<b>2623.63</b>	<b>2734.63</b>	<b>2808.72</b>	<b>2840.52</b>	<b>2930.85</b>	<b>3016.76</b>	<b>3038.48</b>	<b>3078.53</b>	<b>3107.74</b>	<b>3568.25</b>	<b>3707.56</b>	<b>3857.01</b>	<b>4062.02</b>	<b>5.32</b>	<b>54.82</b>	
Hair dressing salons and personal grooming establishme	0.93	100.00	1776.29	2023.51	2109.11	2189.08	2241.94	2310.58	2490.95	2515.90	2521.93	2524.31	2524.31	2580.76	2794.72	3004.41	7.50	48.47	
Electrical appliances for personal care	0.11	100.00	3444.95	3487.10	4080.07	4153.03	4258.26	4285.08	4285.08	4285.57	4285.57	4292.24	4292.24	4845.23	4845.23	5267.32	8.71	51.05	
Other appliances, articles and products for personal care	1.82	100.00	2608.76	2875.46	2969.52	3040.69	3057.22	3162.52	3205.70	3227.08	3286.94	3331.19	4054.55	4210.37	4336.27	4525.44	4.36	57.38	
<b>Personal effects n.e.c</b>	<b>0.25</b>	<b>100.00</b>	<b>1066.62</b>	<b>1128.28</b>	<b>1156.56</b>	<b>1230.94</b>	<b>1281.81</b>	<b>1306.70</b>	<b>1313.14</b>	<b>1313.14</b>	<b>1320.68</b>	<b>1310.46</b>	<b>1387.95</b>	<b>1428.27</b>	<b>1444.31</b>	<b>1476.01</b>	<b>2.20</b>	<b>30.82</b>	
Jewellery, clocks and watches	0.03	100.00	1508.94	1512.75	1517.88	1704.85	1817.44	1855.65	1855.65	1855.65	1855.65	1870.36	2447.49	2502.53	2598.20	2649.15	1.96	75.12	
Other personal effects	0.22	100.00	998.02	1068.65	1100.52	1157.44	1198.73	1221.56	1229.00	1229.00	1237.71	1223.63	1223.63	1261.66	1265.35	1294.07	2.27	21.09	
<b>Medical aid contribution</b>	<b>0.75</b>	<b>100.00</b>	<b>2665.09</b>	<b>3376.19</b>	<b>4140.94</b>	<b>4313.34</b>	<b>4329.30</b>	<b>4344.56</b>	<b>4344.56</b>	<b>5085.51</b>	<b>5824.49</b>	<b>6258.00</b>	<b>6294.05</b>	<b>6574.00</b>	<b>6643.06</b>	<b>7120.59</b>	<b>7.19</b>	<b>110.91</b>	
Medical aid contribution	0.39	100.00	2082.63	3186.01	4657.43	4989.14	5019.84	5049.20	5049.20	5049.20	5050.40	5352.32	5414.60	5552.95	5571.95	5602.65	0.55	75.85	
Car insurance	0.36	100.00	3295.43	3581.99	3581.99	3581.99	3581.99	3581.99	3581.99	3581.99	5124.79	6662.19	7238.13	7245.78	7678.97	7802.20	8763.30	12.32	144.65
<b>other financial nec</b>	<b>1.09</b>	<b>100.00</b>	<b>540.19</b>	<b>540.25</b>	<b>1077.64</b>	<b>1240.20</b>	<b>1360.74</b>	<b>1333.81</b>	<b>1333.81</b>	<b>1573.50</b>	<b>1578.52</b>	<b>1568.70</b>	<b>1568.70</b>	<b>1579.11</b>	<b>1580.48</b>	<b>1580.48</b>	<b>0.00</b>	<b>192.55</b>	
other financial nec	1.09	100.00	540.19	540.25	1077.64	1240.20	1360.74	1333.81	1333.81	1573.50	1578.52	1568.70	1568.70	1579.11	1580.48	1580.48	0.00	192.55	
<b>Other Services</b>	<b>1.51</b>	<b>100.00</b>	<b>5823.71</b>	<b>6349.15</b>	<b>6352.44</b>	<b>6645.80</b>	<b>6799.92</b>	<b>7228.96</b>	<b>7817.21</b>	<b>8047.54</b>	<b>8154.46</b>	<b>8202.01</b>	<b>8459.68</b>	<b>8848.69</b>	<b>9250.05</b>	<b>9965.79</b>	<b>7.74</b>	<b>56.96</b>	
Other Services	1.51	100.00	5823.71	6349.15	6352.44	6645.80	6799.92	7228.96	7817.21	8047.54	8154.46	8202.01	8459.68	8848.69	9250.05	9965.79	7.74	56.96	

All ITEMS	100.00	100.00	1958.72	2123.97	2205.24	2301.67	2374.24	2474.51	2608.79	2698.89	2759.83	2803.57	2874.85	2986.44	3062.93	3191.05	4.18	50.24
Food and non alcoholic beverages	31.30	100.00	2669.10	2837.28	2896.30	2983.22	3099.92	3302.51	3561.35	3718.89	3812.52	3875.55	3912.56	4038.04	4139.44	4269.33	3.14	50.47
Non food	68.70	100.00	1635.00	1798.92	1890.33	1991.09	2043.55	2097.20	2174.72	2234.08	2280.13	2315.08	2401.97	2507.24	2572.38	2699.68	4.95	50.07



# Consumer Price Index (February 2019=100)

	Inflation Rate (%) Monthly
<b>2019 Jan Rebased</b>	10.8
Feb	1.7
Mar	4.4
Apr	5.5
May	12.5
Jun	39.3
Jul	21.0
Aug	18.1
Sep	17.7
Oct	38.8
Nov	17.5
Dec	16.6
<b>2020 Jan Rebased</b>	2.2
Feb	13.5
Mar	26.6
Apr	17.6
May	15.1
Jun	31.7
Jul	35.5
Aug	8.4
Sep	3.8
Oct	4.4
Nov	3.2
Dec	4.2
<b>2021 Jan</b>	5.4
Feb	3.5
Mar	2.3
Apr	1.6
May	2.5
Jun	3.9
Jul	2.6
Aug	4.2
<b>Mean Month on Month rate of Inflation from January to Aug 2021</b>	3.2
<b>Mean Month on Month rate of Inflation from Jan-Dec 2020</b>	13.8
<b>The annual average Month on Month rate of Inflation from Jan-Dec 2019</b>	17.0

## Provincial Consumer Price Indices (February 2019=100)

	Bulawayo	Manicaland	Mash Central	Mash East	Mash West	Mat North	Mat South	Midlands	Masvingo	Harare	National
Weights	9.8	10.9	5.8	9.5	9.4	3.9	4.9	10.2	11.2	24.3	100.0
<b>2019</b>	239.7	270.5	241.6	237.7	254.8	266.0	235.0	250.8	253.3	261.6	253.2
<b>2020</b>	1,465.3	1,629.1	1,899.5	1,470.8	1,671.2	1,670.2	1,327.8	1,506.9	1,672.7	1,555.4	1,579.1
<b>2019 Feb</b>	100.0	100.0	100.0	100.0	100.0	100.0	100.0	100.0	100.0	100.0	100.0
<b>Mar</b>	104.4	105.1	104.9	100.8	105.9	106.9	103.4	104.6	103.2	104.9	104.4
<b>Apr</b>	110.1	110.2	105.8	108.9	111.5	113.6	110.3	113.7	108.7	109.8	110.1
<b>May</b>	123.6	130.4	121.3	119.4	127.4	126.9	120.0	126.1	122.9	122.2	124.0
<b>Jun</b>	158.9	188.8	174.8	177.0	166.2	182.1	164.0	172.7	171.7	171.7	172.6
<b>Jul</b>	198.3	239.9	195.3	199.7	204.0	229.1	197.4	209.8	210.6	206.0	208.9
<b>Aug</b>	233.6	274.9	225.7	232.6	244.7	266.2	233.4	241.9	246.7	252.1	246.7
<b>Sep</b>	279.8	310.3	260.5	270.8	289.7	304.4	272.9	276.7	278.9	313.0	290.4
<b>Oct</b>	377.2	435.3	370.4	379.0	410.8	416.7	359.4	387.3	403.4	425.6	402.9
<b>Nov</b>	430.9	495.8	451.0	438.5	487.1	491.0	431.3	468.1	484.9	496.2	473.3
<b>Dec</b>	519.9	584.5	547.4	487.6	555.8	588.7	492.4	558.4	555.0	575.6	551.6
<b>2020 Jan Reb</b>	530.3	595.6	557.2	502.7	571.3	603.4	500.7	568.7	565.3	589.5	563.9
<b>Feb</b>	589.8	656.2	647.6	574.2	623.0	658.1	560.7	631.5	644.7	698.5	640.2
<b>Mar</b>	738.4	796.2	837.7	684.8	932.3	814.7	681.8	791.2	777.2	889.4	810.4
<b>Apr</b>	873.8	943.3	1,014.5	853.3	1,092.0	973.8	787.7	940.5	955.0	995.1	953.4
<b>May</b>	1,000.9	1,108.1	1,220.1	1,016.9	1,205.7	1,143.1	898.6	1,069.5	1,112.7	1,129.8	1,097.7
<b>Jun</b>	1,315.8	1,483.3	1,771.2	1,340.5	1,553.5	1,502.2	1,204.2	1,396.0	1,506.7	1,432.9	1,445.2
<b>Jul</b>	1,774.8	2,025.4	2,438.7	1,861.5	2,048.8	2,145.7	1,676.0	1,863.3	2,116.2	1,885.6	1,958.7
<b>Aug</b>	1,973.2	2,205.8	2,661.3	2,025.9	2,192.9	2,301.2	1,793.9	2,001.6	2,283.7	2,046.9	2,124.0
<b>Sep</b>	2,039.3	2,316.4	2,809.5	2,131.1	2,297.9	2,357.5	1,885.8	2,071.8	2,367.7	2,092.0	2,205.2
<b>Oct</b>	2,166.4	2,388.7	2,851.5	2,161.6	2,418.5	2,403.1	1,915.6	2,182.3	2,484.8	2,222.2	2,301.7
<b>Nov</b>	2,261.9	2,468.3	2,954.1	2,175.2	2,510.7	2,498.1	1,979.8	2,234.0	2,568.9	2,292.0	2,374.2
<b>Dec</b>	2,319.5	2,561.9	3,030.6	2,322.2	2,607.8	2,641.7	2,048.8	2,332.6	2,690.0	2,391.6	2,474.5
<b>2020 Jan</b>	2,453.0	2,774.6	3,140.6	2,470.8	2,741.4	2,820.6	2,154.8	2,443.9	2,849.3	2,488.1	2,608.8
<b>Feb</b>	2,528.5	2,884.7	3,273.2	2,574.4	2,868.3	2,990.2	2,215.2	2,508.3	2,908.0	2,563.8	2,698.9
<b>Mar</b>	2,578.4	2,949.6	3,311.8	2,648.6	2,925.7	3,012.3	2,245.7	2,582.6	2,995.1	2,623.8	2,759.8
<b>Apr</b>	2,593.7	2,978.9	3,382.4	2,698.8	2,982.1	3,091.1	2,296.9	2,611.1	3,049.9	2,665.8	2,803.6
<b>May</b>	2,696.4	3,050.6	3,446.9	2,774.2	3,090.5	3,150.5	2,319.4	2,677.8	3,108.2	2,729.4	2,874.8
<b>Jun</b>	2,766.5	3,161.4	3,698.1	2,888.1	3,184.7	3,227.2	2,366.2	2,753.3	3,197.9	2,874.5	2,986.4
<b>Jul</b>	2,811.1	3,229.6	3,797.0	2,933.7	3,303.3	3,319.0	2,418.8	2,826.8	3,275.3	2,961.1	3,062.9
<b>Aug</b>	2,900.8	3,347.0	3,964.8	3,099.9	3,442.6	3,508.1	2,515.7	2,952.6	3,391.0	3,084.0	3,191.0

## Provincial Monthly Inflation rates (February 2019=100)

	Bulawayo	Manicaland	Mash Central	Mash East	Mash West	Mat North	Mat South	Midlands	Masvingo	Harare	National
<b>Weights</b>	<b>9.8</b>	<b>10.9</b>	<b>5.8</b>	<b>9.5</b>	<b>9.4</b>	<b>3.9</b>	<b>4.9</b>	<b>10.2</b>	<b>11.2</b>	<b>24.3</b>	<b>100.0</b>
<b>2019</b>	18.3	20.0	19.3	17.9	19.1	19.9	17.7	19.2	19.3	19.6	19.1
<b>2020</b>	13.8	13.7	16.2	14.5	14.5	14.0	13.2	13.2	14.7	13.0	13.9
<b>2019 Feb</b>											
<b>Mar</b>	4.4	5.1	4.9	0.8	5.9	6.9	3.4	4.6	3.2	4.9	4.4
<b>Apr</b>	5.5	4.9	0.9	8.0	5.3	6.2	6.6	8.6	5.2	4.6	5.5
<b>May</b>	12.2	18.3	14.7	9.7	14.3	11.7	8.8	10.9	13.1	11.3	12.5
<b>Jun</b>	28.6	44.8	44.1	48.2	30.4	43.6	36.7	37.0	39.7	40.6	39.3
<b>Jul</b>	24.8	27.1	11.7	12.8	22.7	25.8	20.4	21.4	22.7	19.9	21.0
<b>Aug</b>	17.8	14.6	15.6	16.5	20.0	16.2	18.2	15.3	17.1	22.4	18.1
<b>Sep</b>	19.8	12.9	15.4	16.4	18.4	14.3	16.9	14.4	13.1	24.2	17.7
<b>Oct</b>	34.8	40.3	42.2	39.9	41.8	36.9	31.7	39.9	44.6	36.0	38.7
<b>Nov</b>	14.2	13.9	21.7	15.7	18.6	17.8	20.0	20.9	20.2	16.6	17.5
<b>Dec</b>	20.7	17.9	21.4	11.2	14.1	19.9	14.2	19.3	14.4	16.0	16.6
<b>2020 Jan Reb</b>	2.0	1.9	1.8	3.1	2.8	2.5	1.7	1.9	1.9	2.4	2.2
<b>Feb</b>	11.2	10.2	16.2	14.2	9.0	9.1	12.0	11.0	14.0	18.5	13.5
<b>Mar</b>	25.2	21.3	29.4	19.3	49.6	23.8	21.6	25.3	20.5	27.3	26.6
<b>Apr</b>	18.3	18.5	21.1	24.6	17.1	19.5	15.5	18.9	22.9	11.9	17.6
<b>May</b>	14.5	17.5	20.3	19.2	10.4	17.4	14.1	13.7	16.5	13.5	15.1
<b>Jun</b>	31.5	33.9	45.2	31.8	28.8	31.4	34.0	30.5	35.4	26.8	31.7
<b>Jul</b>	34.9	36.5	37.7	38.9	31.9	42.8	39.2	33.5	40.4	31.6	35.5
<b>Aug</b>	11.2	8.9	9.1	8.8	7.0	7.2	7.0	7.4	7.9	8.5	8.4
<b>Sep</b>	3.4	5.0	5.6	5.2	4.8	2.4	5.1	3.5	3.7	2.2	3.8
<b>Oct</b>	6.2	3.1	1.5	1.4	5.2	1.9	1.6	5.3	4.9	6.2	4.4
<b>Nov</b>	4.4	3.3	3.6	0.6	3.8	4.0	3.4	2.4	3.4	3.1	3.2
<b>Dec</b>	2.5	3.8	2.6	6.8	3.9	5.7	3.5	4.4	4.7	4.3	4.2
<b>2020 Jan</b>	5.8	8.3	3.6	6.4	5.1	6.8	5.2	4.8	5.9	4.0	5.4
<b>Feb</b>	3.1	4.0	4.2	4.2	4.6	6.0	2.8	2.6	2.1	3.0	3.5
<b>Mar</b>	2.0	2.2	1.2	2.9	2.0	0.7	1.4	3.0	3.0	2.3	2.3
<b>Apr</b>	0.6	1.0	2.1	1.9	1.9	2.6	2.3	1.1	1.8	1.6	1.6
<b>May</b>	4.0	2.4	1.9	2.8	3.6	1.9	1.0	2.6	1.9	2.4	2.5
<b>Jun</b>	2.6	3.6	7.3	4.1	3.0	2.4	2.0	2.8	2.9	5.3	3.9
<b>Jul</b>	1.6	2.2	2.7	1.6	3.7	2.8	2.2	2.7	2.4	3.0	2.6
<b>Aug</b>	3.2	3.6	4.4	5.7	4.2	5.7	4.0	4.4	3.5	4.1	4.2

## Provincial Year on Year Inflation rates (February 2019=100)

	Bulawayo	Manicaland	Mash Central	Mash East	Mash West	Mat North	Mat South	Midlands	Masvingo	Harare	National
Weights	9.8	10.9	5.8	9.5	9.4	3.9	4.9	10.2	11.2	24.3	100.0
<b>2020</b>	603.8	607.6	800.8	607.1	684.7	637.5	548.5	608.6	670.0	627.9	634.9
<b>2020 Jan Rebased</b>											
<b>Feb</b>	489.8	556.2	547.6	474.2	523.0	558.1	460.7	531.5	544.7	598.5	540.2
<b>Mar</b>	607.3	657.5	698.9	579.0	780.7	661.9	559.1	656.3	652.8	747.5	676.4
<b>Apr</b>	693.5	755.8	858.6	683.7	879.7	757.5	614.3	727.5	778.9	806.7	765.6
<b>May</b>	709.8	749.9	905.5	751.4	846.4	801.1	648.9	748.3	805.5	824.7	785.5
<b>Jun</b>	728.0	685.6	913.1	657.4	834.8	724.9	634.3	708.2	777.7	734.3	737.3
<b>Jul</b>	794.9	744.1	1,148.7	832.0	904.5	836.5	748.9	788.3	904.8	815.4	837.5
<b>Aug</b>	744.6	702.4	1,079.1	771.0	796.3	764.4	668.5	727.4	825.8	712.0	761.0
<b>Sep</b>	628.8	646.6	978.4	686.9	693.1	674.5	590.9	648.6	748.8	568.4	659.4
<b>Oct</b>	474.4	448.7	669.8	470.4	488.7	476.7	432.9	463.5	516.0	422.1	471.3
<b>Nov</b>	424.9	397.9	555.1	396.1	415.4	408.8	359.0	377.3	429.8	361.9	401.7
<b>Dec</b>	346.1	338.3	453.7	376.2	369.2	348.7	316.1	317.8	384.7	315.5	348.6
<b>2020 Jan</b>	362.6	365.8	463.7	391.5	379.8	367.5	330.4	329.7	404.1	322.1	362.6
<b>Feb</b>	328.7	339.6	405.5	348.4	360.4	354.4	295.1	297.2	351.1	267.1	321.6
<b>Mar</b>	249.2	270.5	295.3	286.8	213.8	269.8	229.4	226.4	285.4	195.0	240.6
<b>Apr</b>	196.8	215.8	233.4	216.3	173.1	217.4	191.6	177.6	219.4	167.9	194.1
<b>May</b>	169.4	175.3	182.5	172.8	156.3	175.6	158.1	150.4	179.3	141.6	161.9
<b>Jun</b>	110.2	113.1	108.8	115.4	105.0	114.8	96.5	97.2	112.2	100.6	106.6
<b>Jul</b>	58.4	59.5	55.7	57.6	61.2	54.7	44.3	51.7	54.8	57.0	56.4
<b>Aug</b>	47.0	51.7	49.0	53.0	57.0	52.4	40.2	47.5	48.5	50.7	50.2