



26 May 2021

# CONSUMER PRICE INDEX (FEBRUARY 2019 = 100) – MAY 2021

The month on month inflation rate in May 2021 was 2.54 percent gaining 0.96 percentage points on the April 2021 rate of 1.58 percent. **(See note on period of data collection below).**

This means that prices as measured by the all items CPI increased by an average rate of 2.54 percent from April 2021 to May 2021.

- *The month-on-month inflation rate is given by the percentage change in the index of the relevant month of the current year compared with the index of the previous month in the current year.*

The month on month Food and Non Alcoholic Beverages inflation rate stood at 0.95 percent in May 2021, shedding 0.70 percentage points on the April 2021 rate of 1.65 percent. The month on month non-food inflation rate stood at 3.75 percent, gaining 2.22 percentage points on the April 2021 rate of 1.53 percent.

The CPI for the month ending May 2021 stood at 2, 874.85 compared to 2, 803.57 in April 2021 and 1,097.65 in May 2020.

The year on year inflation rate (annual percentage change) for the month of May 2021 as measured by the all items Consumer Price Index (CPI) stood at 161.91 percent.

This means that prices as measured by the all items CPI increased by an average of 161.91 percent between May 2020 and May 2021.

*The year-on-year inflation rate is given by the percentage change in the index of the relevant month of the current year compared with the index of the same month in the previous year.*

- 
- 
- 
- 

- 
- 
- 

## Period of Data Collection

It is important to note that data on prices was collected during the period from 12 to 18 May 2021. The changes in prices in this report refer to that period of data collection.

## THE NEW CONSUMER PRICE INDEX

With effect from March 2019 ZIMSTAT is publishing the new Consumer Price Index (CPI) with new weights and a classification. The use of a Classification of Individual Consumption by Purpose (COICOP) resulted in the creation of a new classification which resulted in coming up with 83 classes, 41 groups and 12 divisions. The number of items in the CPI basket is 495.

The implementation of the COICOP classification is also part of the harmonisation project of Consumer Price Indices in different regions like the SADC region. All member states are supposed to adopt the new procedure to enable inter country comparisons of the CPI and the rate of inflation. The new weights are therefore applicable from February 2019 onwards.

### **Mean Month on Month Rates**

The mean month on month inflation rate for the period January to December 2020 was 13.8 percent while the mean month on month inflation rate for the same period in 2019 was 17.0 percent. The mean month on month inflation rate from January to May 2021 was 3.1 percent.

#### ***Contact us***

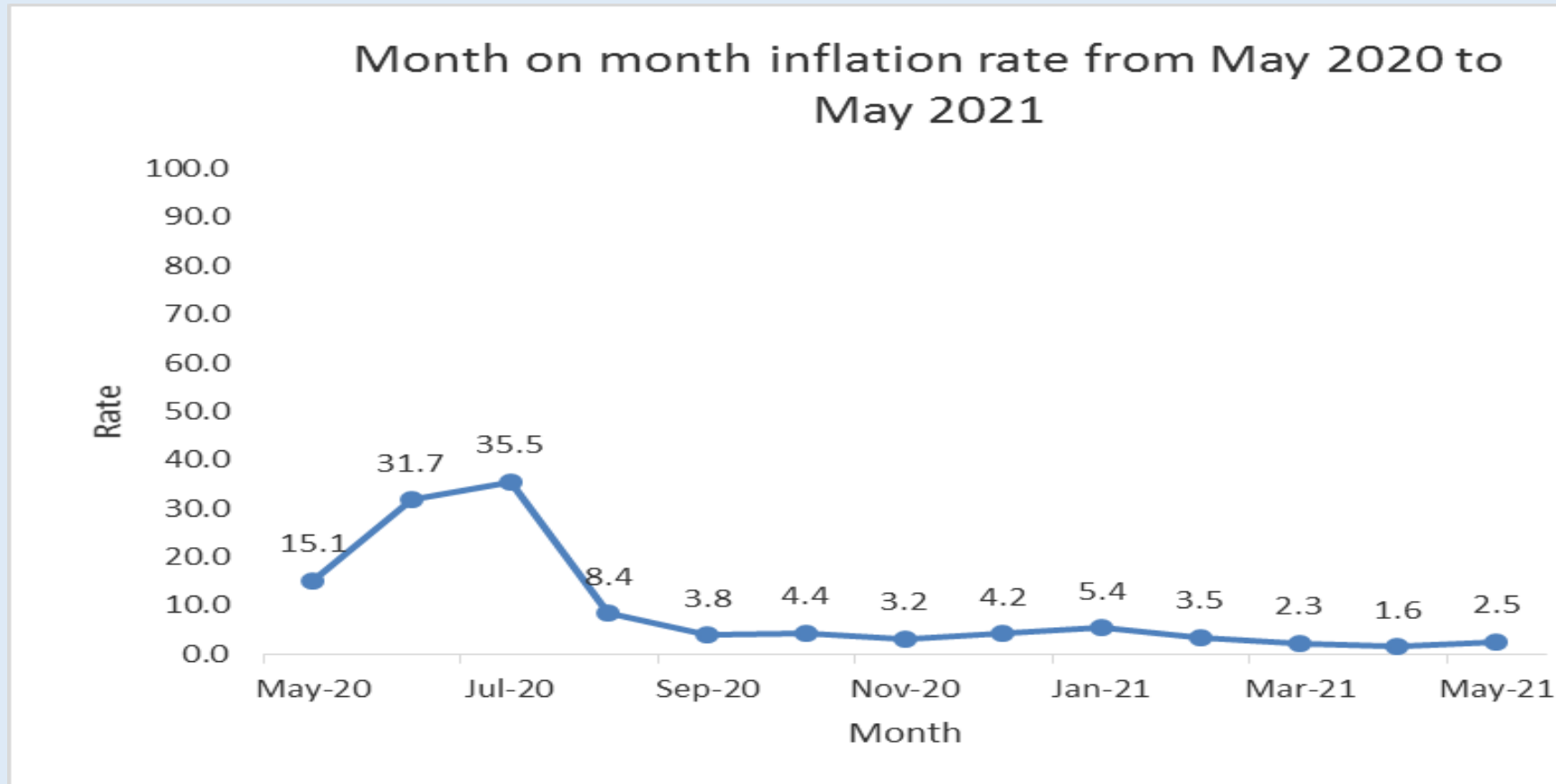
Tel : 706681/7

E-mail : [prices@zimstat.co.zw](mailto:prices@zimstat.co.zw)

**Table 1: Month on month inflation rate from May 2020 to May 2021**

Months	May-20	Jun-20	Jul-20	Aug-20	Sep-20	Oct-20	Nov-20	Dec-20	Jan-21	Feb-21	Mar-21	Apr-21	May-21
Inflation Rate	15.1	31.7	35.5	8.4	3.8	4.4	3.2	4.2	5.4	3.5	2.3	1.6	2.5

**Figure 1: Month on month inflation rate from May 2020 to May 2021**



# Consumer Price Index (February 2019=100)

	Food and non alcoholic beverages	Alcoholic beverages and tobacco	Clothing and footwear	Housing water electricity gas and other fuels	Furniture, household equipment and maintenance	Health	Transport	Communication	Recreation and culture	Education	Restaurant s and hotels	Miscellaneous goods and services	All Items	Inflation Rate (%) Monthly	Inflation Rate (%) Annual
<b>Weights</b>	<b>31.3</b>	<b>4.9</b>	<b>4.3</b>	<b>27.6</b>	<b>5.3</b>	<b>1.4</b>	<b>8.4</b>	<b>2.7</b>	<b>2.3</b>	<b>4.3</b>	<b>1.1</b>	<b>6.5</b>	<b>100.0</b>		
<b>2013</b>	60.8	64.3	51.9	89.5	55.9	64.7	48.4	119.6	52.3	73.9	59.6	59.5	63.2		1.6
<b>2014</b>	58.9	65.5	51.7	90.3	54.7	65.2	48.7	114.6	51.8	85.7	60.0	58.3	63.1		-0.2
<b>2015</b>	56.9	65.7	51.0	88.0	53.6	65.7	48.0	98.7	51.4	85.9	59.4	57.8	61.6		-2.4
<b>2016</b>	55.0	64.9	50.2	85.9	52.0	65.6	46.9	97.1	51.0	94.9	59.4	56.8	60.6		-1.6
<b>2017</b>	56.4	65.1	50.1	84.6	53.8	65.7	46.6	96.9	51.9	94.3	60.2	58.0	61.1		0.9
<b>2018</b>	64.8	69.6	60.9	85.5	63.7	70.7	50.5	96.5	62.6	96.1	66.1	66.1	67.6		10.6
<b>2019</b>	295.7	293.6	269.5	163.1	262.7	300.5	252.1	186.9	270.7	127.0	241.9	279.4	240.3		255.3
<b>2020</b>	2,072.8	2,185.2	2,015.1	663.0	1,710.4	2,345.5	1,481.0	2,655.8	1,808.5	547.0	1,590.9	2,356.4	1,579.1		557.2
<b>2020 Jan</b>	758.7	672.5	639.8	346.5	583.2	728.1	546.1	327.0	596.9	186.1	590.5	717.7	563.9	2.2	473.3
<b>Feb</b>	810.3	729.6	703.9	354.3	623.9	885.0	598.6	1,046.4	704.1	362.8	607.7	939.1	640.2	13.5	540.2
<b>Mar</b>	953.6	939.4	965.2	556.8	807.1	1,126.5	707.0	1,091.0	1,118.1	365.2	714.0	1,152.1	810.4	26.6	676.4
<b>Apr</b>	1,224.1	1,185.6	1,095.1	573.8	1,001.3	1,408.9	769.7	1,124.3	1,223.4	369.3	864.5	1,326.3	953.4	17.6	765.6
<b>May</b>	1,404.3	1,528.2	1,303.1	593.4	1,215.2	1,666.7	946.5	1,171.8	1,346.2	369.4	1,121.2	1,635.5	1,097.7	15.1	785.5
<b>Jun</b>	1,934.3	2,067.0	1,939.5	638.0	1,679.5	2,396.2	1,253.9	1,444.2	1,877.4	372.6	1,485.1	2,118.1	1,445.2	31.7	737.3
<b>Jul</b>	2,669.1	2,755.2	2,636.4	715.0	2,224.5	3,051.6	1,889.0	3,161.1	2,199.0	376.9	2,047.1	2,854.7	1,958.7	35.5	837.5
<b>Aug</b>	2,837.3	3,022.6	2,834.6	735.2	2,398.7	3,265.8	2,097.1	3,779.7	2,369.4	677.9	2,219.1	3,174.0	2,124.0	8.4	761.0
<b>Sep</b>	2,896.3	3,099.0	2,882.9	757.3	2,435.2	3,350.4	2,132.6	4,529.6	2,506.7	836.6	2,226.4	3,404.3	2,205.2	3.8	659.4
<b>Oct</b>	2,983.2	3,274.9	2,955.2	874.1	2,458.4	3,387.8	2,197.1	4,700.9	2,546.6	877.7	2,320.4	3,556.0	2,301.7	4.4	471.3
<b>Nov</b>	3,099.9	3,396.1	3,065.4	903.4	2,508.0	3,410.1	2,276.1	4,719.1	2,590.9	883.9	2,421.5	3,630.2	2,374.2	3.2	401.7
<b>Dec</b>	3,302.5	3,551.8	3,159.8	908.1	2,589.6	3,469.0	2,358.3	4,774.2	2,623.5	885.5	2,472.8	3,768.8	2,474.5	4.2	348.6
<b>2021 Jan</b>	3,561.4	3,709.2	3,196.3	952.0	2,676.4	3,749.3	2,449.6	4,808.2	2,668.6	886.0	2,682.4	3,944.7	2,608.8	5.4	362.6
<b>Feb</b>	3,718.9	3,830.5	3,226.4	982.6	2,723.6	3,842.4	2,553.0	4,808.5	2,655.0	887.1	2,734.6	4,134.6	2,698.9	3.5	321.6
<b>Mar</b>	3,812.5	3,886.0	3,244.6	998.4	2,763.0	3,983.8	2,586.7	5,052.9	2,686.3	891.9	2,830.2	4,264.4	2,759.8	2.3	240.6
<b>Apr</b>	3,875.6	3,925.7	3,299.9	1,009.9	2,791.9	4,022.0	2,610.5	5,054.4	2,708.3	1,036.6	2,929.1	4,336.8	2,803.6	1.6	194.1
<b>May</b>	3,912.6	4,004.7	3,341.0	1,019.6	2,941.3	4,139.0	2,662.4	5,072.2	3,226.4	1,036.6	3,636.3	4,608.3	2,874.8	2.5	161.9







# Consumer Price Index (February 2019=100)

	Inflation Rate (%) Monthly
<b>2019 Jan Rebased</b>	10.8
Feb	1.7
Mar	4.4
Apr	5.5
May	12.5
Jun	39.3
Jul	21.0
Aug	18.1
Sep	17.7
Oct	38.8
Nov	17.5
Dec	16.6
<b>2020 Jan Rebased</b>	2.2
Feb	13.5
Mar	26.6
Apr	17.6
May	15.1
Jun	31.7
Jul	35.5
Aug	8.4
Sep	3.8
Oct	4.4
Nov	3.2
Dec	4.2
<b>2021 Jan</b>	5.4
Feb	3.5
Mar	2.3
Apr	1.6
May	2.5
<b>Mean Month on Month rate of Inflation from January to May 2021</b>	3.1
<b>Mean Month on Month rate of Inflation from Jan-Dec 2020</b>	13.8
<b>The annual average Month on Month rate of Inflation from Jan-Dec 2019</b>	17.0