

## HUMAN SETTLEMENTS AND ENVIRONMENTAL HEALTH STATISTICS REPORT 2023



Zimbabwe National Statistics Agency

P.O. Box C.Y. 342

Causeway Harare

Telephone 263-4-706681/8 or 263-4-703971

Email: [info@zimstat.co.zw](mailto:info@zimstat.co.zw)

Website: [www.zimstat.co.zw](http://www.zimstat.co.zw)

## Table of Contents

Acronyms.....	3
<b>Human Settlements.....</b>	<b>4</b>
Table 1.1: Population Distribution by Province and Sex .....	4
Table 1.2: Annual Population Growth Rate by Province 2012-2022.....	4
Table 1.3: Population Density by Province .....	5
Table 1.4: Distribution of Households by Main Source of Water (Drinking and Cooking) .....	5
Table 1.5: Distribution of Households by Type of Toilet Facility mostly used.....	5
Table 1.6: Distribution of Households in Dwelling Units by Source of Energy and Province .....	6
Table 1.7: Main Source of Energy for Cooking .....	7
<b>Environmental Health .....</b>	<b>8</b>
ACUTE RESPIRATORY DISEASES .....	9
Table 1.8: ARI by Province/City and Category, 2023 .....	9
Table 1.9: ARI by Age group,2022- 2023 .....	10
Table 1.10: Asthma Cases by Age Group and Sex, 2022-2023 .....	10
Table 1.11: Asthma Breakdown by Province,2022-2023 .....	11
Table 1.12: Tuberculosis Cases by Sex, Age group and Province, 2022-2023 .....	12
<b>Vector Borne Diseases .....</b>	<b>13</b>
Table 1.13: Malaria Cases by Province, Age group and year.....	13
<b>Water Related Diseases and Conditions .....</b>	<b>14</b>
Table 1.14: Diarrhoeal diseases by Province, 2022- 2023 .....	14
Table 1.15: Diarrhoea Cases by Age group and Sex, 2022-2023.....	15
Table 1.16: Cholera and Typhoid Cases ,2022-2023. ....	15
Table 1.17: Dysentery Cases by Age Group and Sex 2022- 2023.....	16
Table 1.18: Confirmed Schistomiasis Cases by Age Group, Sex and Year.....	17
Table 1.19: Confirmed Schistomiasis Cases & Incidences by Province & Age Group, 2022-2023.....	18
<b>Cancers.....</b>	<b>19</b>
Table 1.20: Number of Cancer Patients by Type of Cancer, Age Group, Sex and Year.....	19
Table 1.21: Number of Cancer Patients by Type of Cancer, Age Group, Sex and Province, 2023 .....	19
Table 1.22: Kaposi Sarcoma Cases by Age Group, Sex and Year.....	20

## Acronyms

ARI	Acute Respiratory Infections
Mash Central	Mashonaland Central
Mash West	Mashonaland West
Mash East	Mashonaland East
Mat South	Matebeleland South
Mat North	Matebeleland North
ZIMSTAT	Zimbabwe National Statistics Agency

## Human Settlements

Human settlements and environmental health are closely intertwined, as the quality of living environments has significant impacts on health and well-being. This chapter presents statistical data and trends related to human settlements and environmental health, including access to basic services such as clean water, sanitation, and healthcare.

**Table 1.1: Population Distribution by Province and Sex**

Province	Male	Female	Total	Percent	Sex Ratio
Bulawayo	307,983	357,957	665,940	4.4	86
Manicaland	965,532	1,072,230	2,037,762	13.4	90
Mashonaland	681,313	703,578	1,384,891	9.1	97
Mashonaland East	835,264	895,917	1,731,181	11.4	93
Mashonaland West	934,821	958,757	1,893,578	12.5	98
Mat North	400,188	427,438	827,626	5.5	94
Mat South	370,713	389,632	760,345	5.0	95
Midlands	870,664	941,244	1,811,908	11.9	93
Masvingo	763,537	875,002	1,638,539	10.8	87
Harare	1,159,543	1,267,666	2,427,209	16.0	91
<b>Total</b>	<b>7,289,558</b>	<b>7,889,421</b>	<b>15,178,979</b>	<b>100.0</b>	<b>92</b>

Source: ZIMSTAT, Human Population and Housing Census, 2022.

**Table 1.1: Annual Population Growth Rate by Province 2012-2022**

Province	2012 Population Census	2022 Population	Growth Rate
Bulawayo	653,337	665,940	0.2
Manicaland	1,752,698	2,037,762	1.5
Mashonaland Central	1,152,520	1,384,891	1.8
Mashonaland East	1,344,955	1,731,181	2.5
Mashonaland West	1,501,656	1,893,578	2.3
Matabeleland North	749,017	827,626	1
Matabeleland South	683,893	760,345	1.1
Midlands	1,614,941	1,811,908	1.2
Masvingo	1,485,090	1,638,539	1
Harare	2,123,132	2,427,209	1.3
<b>Total</b>	<b>13,061,239</b>	<b>15,178,979</b>	<b>1.5</b>

Source: ZIMSTAT Human Population and Housing Census 2022

**Table 1.2: Population Density by Province**

Province	Total Population	Area (Square Km)	Density
Bulawayo	665,940	479	1,390
Manicaland	2,037,762	36,459	56
Mashonaland Central	1,384,891	28,347	49
Mashonaland East	1,731,181	32,230	54
Mashonaland West	1,893,578	57,441	33
Matabeleland North	827,626	75,025	11
Matabeleland South	760,345	54,172	14
Midlands	1,811,908	49,166	37
Masvingo	1,638,539	56,566	29
Harare	2,427,209	872	2,783
<b>Total</b>	<b>15,178,979</b>	<b>390,757</b>	<b>39</b>

Source: ZIMSTAT, Population and Housing Census, 2022

**Table 1.3: Distribution of Households by Main Source of Water (Drinking and Cooking)**

Source of water	Number of households	Percentage
Piped Water Inside dwelling/yard/plot	1,131,290	29.6
Public Tap	172,505	4.5
Borehole	726,500	19
Protected dug well/spring	926,344	24.2
Non-improved source	847,729	22.2
Other improved source	15,887	0.4
<b>Total</b>	<b>3,820,255</b>	<b>99.9</b>

ZIMSTAT, Population and Housing Census, 2022

**Table 1.4: Distribution of Households by Type of Toilet Facility mostly used.**

Type of Toilet	Households	Percentage
Flush Toilet	1,458,267	38.2
Ventilated Improved Pit Latrine (VIP)	596,998	15.6
Pit Toilet with Slab	689,586	18
Pit Latrine Without Slab/Open	261,179	6.8
Compositing Toilet	25,566	0.7
Bucket toilet	21,561	0.6
No Facility/Bush/Field	759,992	19.8
Other	10,337	0.3
<b>Total</b>	<b>3,823,486</b>	<b>100</b>

ZIMSTAT, Population and Housing Census, 2022

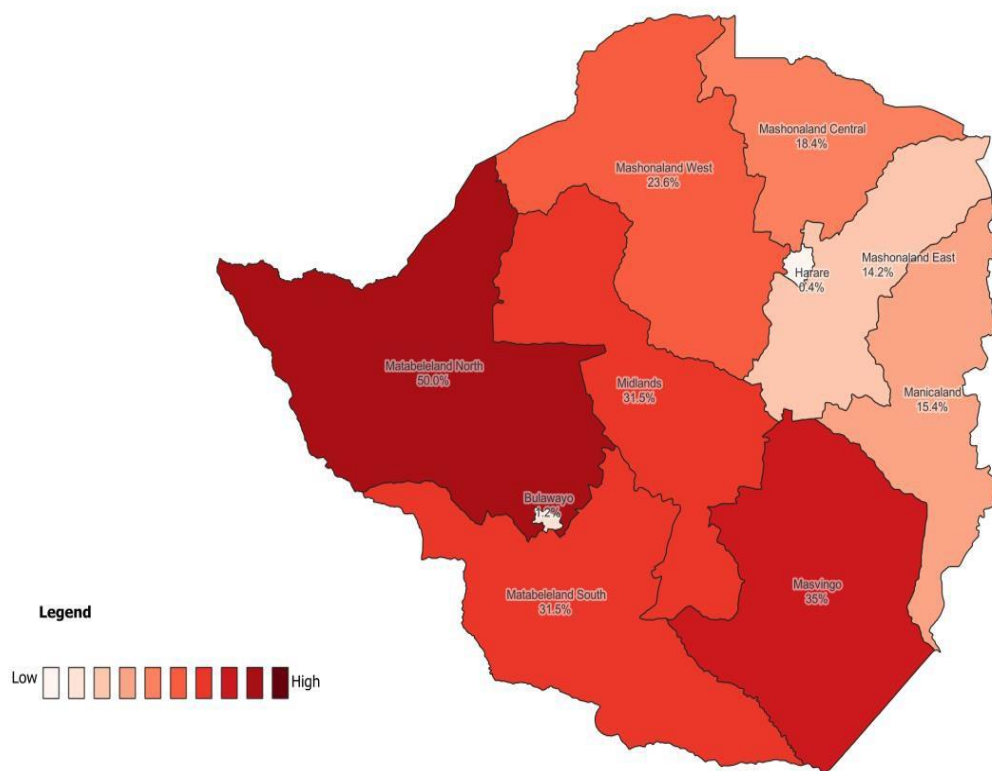


Figure 1.1: Distribution of households Practicing Open Defecation by Province  
 Source: ZIMSTAT, Population and Housing Census, 2022

**Table 1.5: Distribution of Households in Dwelling Units by Source of Energy and Province**

Province	Households				Total
	Grid Electricity	Off-Grid Electricity	Total With electricity	Without electricity	
Bulawayo	158,896	9,481	168,377	10,211	178,588
Manicaland	109,997	144,628	254,625	248,810	503,435
Mashonaland Central	57,867	115,946	173,813	164,345	338,158
Mashonaland East	95,556	161,720	257,276	195,586	452,862
Mashonaland West	151,766	130,891	282,657	183,681	466,338
Matabeleland North	35,316	49,383	84,699	114,633	199,332
Matabeleland South	36,693	52,076	88,769	104,728	193,497
Midlands	126,507	130,654	257,161	183,514	440,675
Masvingo	66,087	159,036	225,123	168,852	393,975
Harare	450,068	126,675	576,743	76,853	653,596
<b>Total</b>	<b>1,288,753</b>	<b>1,080,490</b>	<b>2,369,243</b>	<b>1,451,213</b>	<b>3,820,456</b>

Source: ZIMSTAT, Population and Housing Census, 2022

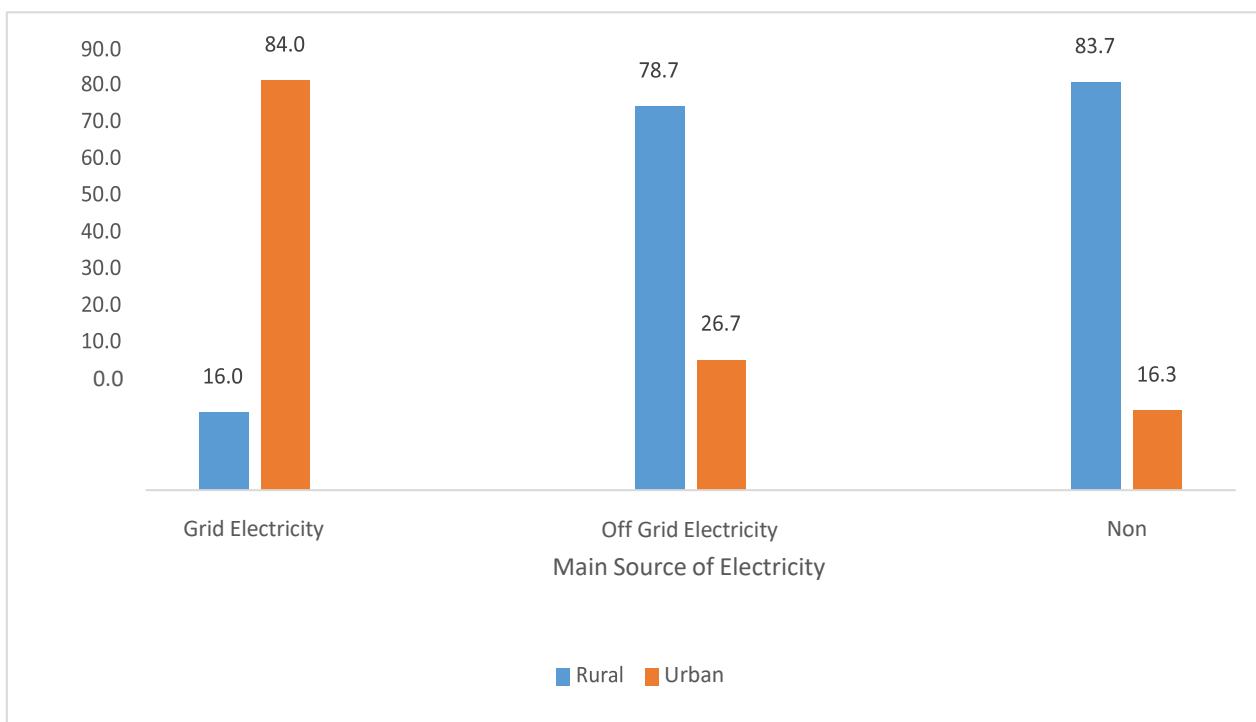


Figure 1.2: Main Source of Electricity by Rural/Urban Areas

Source: ZIMSTAT, Population and Housing Census, 2022

**Table 1.6: Main Source of Energy for Cooking**

Source					
	Wood	Clean Technology for cooking (e.g. Electricity, Bio Gas, LP (Gas), Paraffin, Alcohol/Ethanol)	Solid Fuels for Cooking (e.g. Coal, Charcoal, Animal dung)	No energy Used for Food Cooking	Total
Number of Households	2 318 724	1 477 601	19 496	4 630	<b>3 820 451</b>
Percentage	60.7	38.7	0.5	0.1	<b>100</b>

Source: ZIMSTAT, Population and Housing Census, 2022

# Environmental Health

Climate change is expected to result in changes in transmission of vector-borne diseases. Temperature and precipitation changes are likely to influence the behaviour and geographical distribution of vectors, and thus change the incidence of vector borne diseases, which are major causes of mortality and morbidity in most tropical countries.

A study carried out in Muzarabani district Mashonaland Central Province by the 4<sup>th</sup> National Communications team in 2019, suggests that in times of flooding, water-borne diseases such as cholera, typhoid and dysentery are prevalent in the area and other floods- prone areas in Zimbabwe. Cholera is made worse by the contamination of water by collapse and flooded pit latrines.

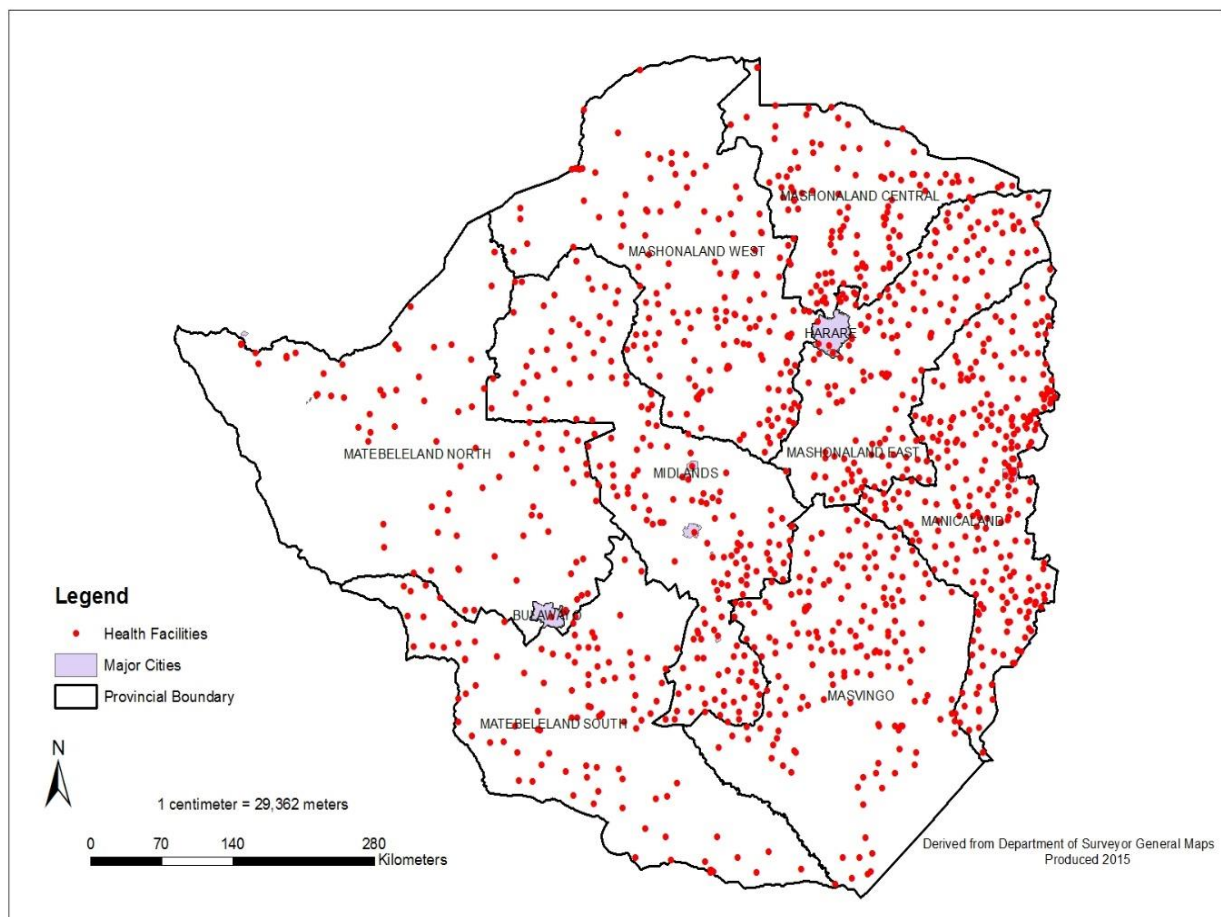


Figure 1.1: Distribution of Health Care Facilities in Zimbabwe

Source: Ministry of Health and Child-welfare

## ACUTE RESPIRATORY DISEASES

**Table 1.8: ARI by Province/City and Category, 2023**

Province/City		Ear, Nose, Throat	Mild	Moderate	Severe	Total	Incidence Rate/1000 Population
Manicaland	Number	55 059	195 577	390 444	9 793	650 873	314.69
	%	8.5	30	60	1.5		
Mash Central	Number	84 061	195 577	390 444	9 793	679 875	483.68
	%	12.4	28.8	57.4	1.4		
Mash East	Number	39 810	193 952	303 252	6 940	543 954	276.6
	%	7.3	35.7	55.7	1.3		
Mash West	Number	38 193	214 681	290 994	10 377	554 245	288.37
	%	6.9	38.7	52.5	1.9		
Mat North	Number	22 864	85 476	172 788	2 510	283 638	337.64
	%	8.1	30.1	60.9	0.9		
Mat South	Number	26 749	89 888	127 722	3 020	247 379	320.54
	%	10.8	36.3	51.6	1.2		
Midlands	Number	49 403	201 122	295 028	10 197	555 750	302.19
	%	8.9	36.2	53.1	1.8		
Masvingo	Number	46 823	252 869	409 541	6 821	716 054	430.55
	%	6.5	35.3	57.2	1		
Harare	Number	99 410	240 021	257 322	22 330	619 083	329.76
	%	16.1	38.8	41.6	3.6		
Chitungwiza	Number	1 852	15 526	5 803	1 051	20 282	53.82
	%	9.1	76.6	28.6	5.2		
Bulawayo	Number	24 175	62 975	61 965	2 510	151 625	224.32
	%	15.9	41.5	40.9	1.7		
<b>National</b>	<b>Number</b>	<b>488 399</b>	<b>1 763 717</b>	<b>2 701 470</b>	<b>81 323</b>	<b>5 034 909</b>	<b>326.8</b>
	<b>%</b>	<b>9.7</b>	<b>35</b>	<b>53.7</b>	<b>1.6</b>		

Source: Ministry of Health and Child-welfare

**Table 1.9: ARI by Age group,2022- 2023**

Year	Cases					
	<5 yrs		5 yrs +		All Age Groups	
	Males	Females	Males	Females	Males	Females
2022	30 677	31 158	65 266	102 388	95 943	133 546
2023	34 797	35 195	75 511	113 407	110 308	148 602

Source: Ministry of Health and Child-welfare

**Table 1.10: Asthma Cases by Age Group and Sex, 2022-2023**

Year	Cases						
	0-24yrs		5 yrs +		All Age Groups		
	Males	Females	Males	Females	Males	Females	
2022		365	328	1 126	1 582	1 491	1 910
2023		379	316	1 210	1 831	1 589	2 147

Source: Ministry of Health and Child-welfare

**Table 1.11: Asthma Breakdown by Province,2022-2023**

Province/City	2022		2023	
	Number	Incidence Rate /1000	Number	Incidence Rate /1000
Manicaland	411	0.20	362	0.18
Mash Central	337	0.24	270	0.19
Mash East	348	0.18	364	0.19
Mash West	315	0.17	490	0.25
Mat North	187	0.23	147	0.17
Mat South	193	0.25	279	0.36
Midlands	417	0.23	448	0.24
Masvingo	294	0.18	337	0.20
Harare	713	0.39	794	0.42
Chitungwiza	9	0.02	37	0.10
Bulawayo	177	0.27	208	0.31
<b>National</b>	<b>3 401</b>	<b>0.22</b>	<b>3 736</b>	<b>0.24</b>

Source: Ministry of Health and Child-welfare

**Table 1.12: Tuberculosis Cases by Sex, Age group and Province, 2022-2023**

Tuberculosis mostly affected males in the age-group 35- 44 years with a total of 3756 in 2022 and 3912 in 2023.

Year	Province	0-4yrs		5--9yrs		10--14yrs		15-19yrs		20--24yrs		25-34yrs		35-44yrs		45-54yrs		55-64yrs		65 yrs+	
		Male	Female	Male	Female	Male	Female	Male	Female	Male	Female	Male	Female	Male	Female	Male	Female	Male	Female	Male	Female
2023	Bulawayo	29	33	18	13	6	13	10	15	59	43	188	109	255	112	145	88	54	37	58	39
	Harare	27	35	6	5	20	9	29	23	76	64	325	186	439	205	217	104	76	44	52	53
	Manicaland	43	20	10	12	12	22	24	49	83	62	223	118	311	150	186	90	92	57	108	70
	Mash Central	28	14	6	17	27	26	48	41	97	61	237	98	303	144	159	105	79	34	101	44
	Mashonaland East	23	22	6	3	7	14	34	27	58	50	263	147	335	151	202	120	110	49	86	56
	Mashonaland West	65	58	16	10	20	18	36	34	119	68	478	151	645	191	321	136	110	60	173	91
	Matabeleland North	24	25	8	11	19	12	14	19	46	29	170	78	215	101	145	60	88	74	150	92
	Matabeleland South	11	13	4	6	9	15	26	12	86	42	267	104	327	113	156	61	77	56	109	66
	Midlands	47	42	16	23	15	21	35	32	159	68	586	193	780	223	404	145	146	73	143	86
	Masvingo	14	22	11	20	12	12	44	31	60	53	209	144	302	162	196	180	87	94	137	113
2022	Bulawayo	46	44	14	7	9	6	16	21	45	32	182	110	256	102	142	83	70	37	64	40
	Harare	15	16	13	11	12	10	37	35	111	88	389	213	488	191	253	123	79	60	66	54
	Manicaland	40	39	13	17	30	29	46	27	65	70	235	138	321	141	218	113	117	64	119	75
	Mash Central	30	20	20	15	19	24	49	43	104	86	211	137	295	140	143	98	45	41	52	36
	Mashonaland East	23	22	5	6	13	8	28	25	70	64	232	111	326	148	150	71	68	51	60	27
	Mashonaland West	42	42	16	13	15	26	36	16	109	74	421	174	584	167	289	123	101	68	160	66
	Matabeleland North	16	23	10	6	5	10	16	14	42	19	210	101	233	103	129	68	73	81	157	83
	Matabeleland South	29	9	13	6	13	6	21	22	48	40	238	100	317	109	151	55	72	50	100	42
	Midlands	28	32	30	23	13	22	39	31	118	63	516	172	667	182	289	126	125	76	129	84
	Masvingo	28	18	21	18	7	15	31	36	72	55	191	135	269	179	178	142	67	84	142	108

Source: Ministry of Health and Child-welfare

## Vector Borne Diseases

**Table 1.13: Malaria Cases by Province, Age group and year.**

Year	Province/City	Age Group					
		<5 yrs		5 yrs +		All Ages	
		clinical Cases	Incidence/1000Popn	clinical Cases	Incidence/1000Popn	clinical Cases	Incidence/1000Popn
2023	Manicaland	4092	13.8	23797	13.4	27889	13.5
	Mash Central	6129	29.4	44623	37.3	50752	36.1
	Mash East	3800	13.7	27905	16.5	31705	16.1
	Mash West	676	2.4	6222	3.8	6898	3.6
	Mat North	2188	19.5	14873	20.4	17061	20.3
	Mat South	157	1.5	1463	2.2	1620	2.1
	Midlands	236	0.9	2363	1.5	2599	1.4
	Masvingo	1947	8.4	16647	11.6	18594	11.2
	Harare	72	0.3	616	0.4	688	0.4
	Chitungwiza	3	0.1	18	0.1	21	0.1
	Bulawayo	52	0.7	255	0.4	307	0.5
	<b>National</b>		<b>19352</b>	<b>9.2</b>	<b>138782</b>	<b>10.4</b>	<b>158134</b>
2022	Manicaland	2698	9.2	15134	8.7	17832	8.8
	Mash Central	4425	21.5	33289	28.2	37714	27.2
	Mash East	3599	13.1	26569	16.0	30168	15.6
	Mash West	348	1.3	3944	2.4	4292	2.3
	Mat North	807	7.3	4117	5.7	4924	5.9
	Mat South	64	0.6	607	0.9	671	0.9
	Midlands	35	0.1	594	0.4	629	0.3
	Masvingo	632	2.8	5252	3.7	5884	3.6
	Harare	45	0.2	318	0.2	362	0.2
	Chitungwiza	2	0.0	13	0.0	15	0.0
	Bulawayo	17	0.2	91	0.2	108	0.2
	<b>National</b>		<b>12672</b>	<b>6.1</b>	<b>89928</b>	<b>6.9</b>	<b>102599</b>

Source: Ministry of Health and Child-welfare

## Water Related Diseases and Conditions

**Table 1.14: Diarrhoeal diseases by Province, 2022- 2023**

Year	Province/City	Diarrhoea		Dysentery		Typhoid		Cholera	
		Cases	Deaths	Cases	Deaths	Cases	Deaths	Cases	Deaths
2 023	Manicaland	56 010	12	2 514	0	0	0	772	34
	Mash Central	59 223	10	3 303	0	1	0	281	25
	Mash East	60 736	1	1 844	0	0	0	186	6
	Mash West	52 587	21	2 609	14	10	0	130	9
	Mat North	22 268	6	1 267	0	0	0	0	0
	Mat South	12 785	12	252	0	9	0	115	4
	Midlands	36 868	20	1 286	1	1	1	210	7
	Masvingo	41 974	19	2 124	2	0	0	825	19
	Harare	22 362	148	268	0	839	2	6 269	47
	Chitungwiza	4 256	0	2	0	1	0	21	1
	Bulawayo	5 311	14	72	0	5	0	3	0
	<b>National</b>	<b>374 380</b>	<b>263</b>	<b>15 541</b>	<b>17</b>	<b>866</b>	<b>3</b>	<b>8 812</b>	<b>152</b>
2 022	Manicaland	59 781	12	2 953	0	1	0	0	0
	Mash Central	58 697	4	3 503	0	0	0	0	0
	Mash East	60 061	1	1 894	0	0	0	0	0
	Mash West	48 914	13	2 249	0	0	0	0	0
	Mat North	19 094	17	900	2	0	0	0	0
	Mat South	11 073	3	196	0	0	0	0	0
	Midlands	36 019	5	1 249	2	0	0	0	0
	Masvingo	38 459	11	2 169	3	0	0	4	0
	Harare	16 188	94	288	1	148	0	0	0
	Chitungwiza	3 049	0	1	0	0	0	0	0
	Bulawayo	6 080	16	89	0	4	0	0	0
	<b>National</b>	<b>357 415</b>	<b>176</b>	<b>15 491</b>	<b>8</b>	<b>153</b>	<b>0</b>	<b>4</b>	<b>0</b>

Source: Ministry of Health and Child-welfare

**Table 1.15: Diarrhoea Cases by Age group and Sex, 2022-2023**

Year	Province/City	Age Group		
		<5 yrs	5 yrs +	All Ages
2022	Manicaland	23 469	36 312	59 781
	Mash Central	30 925	27 772	58 697
	Mash East	29 144	30 917	60 061
	Mash West	27 369	21 545	48 914
	Mat North	8 371	10 723	19 094
	Mat South	4 698	6 375	11 073
	Midlands	16 029	19 990	36 019
	Masvingo	14 352	24 107	38 459
	Harare	10 010	6 178	16 188
	Chitungwiza	1 662	1 387	3 049
	Bulawayo	3 010	3 070	6 080
	<b>National</b>	<b>169 039</b>	<b>188 376</b>	<b>357 415</b>
2023	Manicaland	21 540	34 470	56 010
	Mash Central	29 532	29 691	59 223
	Mash East	27 676	33 060	60 736
	Mash West	27 682	24 905	52 587
	Mat North	8 960	13 308	22 268
	Mat South	5 012	7 773	12 785
	Midlands	16 073	20 795	36 868
	Masvingo	14 679	27 295	41 974
	Harare	12 188	10 174	22 362
	Chitungwiza	2 250	2 006	4 256
	Bulawayo	2 255	3 056	5 311
	<b>National</b>	<b>167 847</b>	<b>206 533</b>	<b>374 380</b>

Source: Ministry of Health and Child-welfare

**Table 1.16: Cholera and Typhoid Cases ,2022-2023.**

Year	Cholera	Typhoid
2022	4	153
2023	8 812	866

Source: Ministry of Health and Child-welfare

**Table 1.17: Dysentery Cases by Age Group and Sex 2022- 2023**

Year	Province/ City	Age Group		
		<5 yrs	5 yrs +	All Ages
2023	Manicaland	401	2 552	2 953
	Mash Central	875	2 628	3 503
	Mash East	396	1 498	1 894
	Mash West	797	1 452	2 249
	Mat North	252	648	900
	Mat South	47	149	196
	Midlands	286	963	1 249
	Masvingo	352	1 817	2 169
	Harare	98	190	288
	Chitungwiza	0	1	1
	Bulawayo	44	45	89
	<b>National</b>	<b>3 548</b>	<b>11 943</b>	<b>15 491</b>
2022	Manicaland	368	2 146	2 514
	Mash Central	735	2 568	3 303
	Mash East	423	1 421	1 844
	Mash West	846	1 763	2 609
	Mat North	339	928	1 267
	Mat South	51	201	252
	Midlands	284	1 002	1 286
	Masvingo	339	1 785	2 124
	Harare	64	204	268
	Chitungwiza	1	1	2
	Bulawayo	34	38	72
	<b>National</b>	<b>3 484</b>	<b>12 057</b>	<b>15 541</b>

Source: Ministry of Health and Child-welfare

**Table 1.18: Confirmed Schistosomiasis Cases by Age Group, Sex and Year.**

Year	Province/City	Age Group					
		<5 yrs		5 yrs +		All Ages	
		Males	Females	Males	Females	Males	Females
2022	Manicaland	159	145	5 457	2 346	5 616	2 491
	Mash Central	619	455	7 708	4 844	8 327	5 299
	Mash East	188	86	5 016	1 627	5 204	1 713
	Mash West	213	144	3 875	1 846	4 088	1 990
	Mat North	27	14	421	222	448	236
	Mat South	15	10	370	151	385	161
	Midlands	93	48	3 005	1 119	3 098	1 167
	Masvingo	106	80	4 826	2 005	4 932	2 085
	Harare	20	11	149	514	169	525
	Chitungwiza	0	0	7	5	7	5
	Bulawayo	14	3	44	9	58	12
	<b>National</b>	<b>1 454</b>	<b>996</b>	<b>30 878</b>	<b>14 688</b>	<b>32 332</b>	<b>15 684</b>
2023	Manicaland	128	117	4 747	1 822	4 875	1 939
	Mash Central	1 880	411	6 570	3 612	8 450	4 023
	Mash East	156	90	5 048	1 887	5 204	1 977
	Mash West	187	133	3 390	1 679	3 577	1 812
	Mat North	52	19	434	181	486	200
	Mat South	24	9	396	107	420	116
	Midlands	88	54	2 973	1 150	3 061	1 204
	Masvingo	112	77	5 429	2 276	5 541	2 353
	Harare	22	14	154	55	176	69
	Chitungwiza	0	1	8	3	8	4
	Bulawayo	12	5	28	15	40	20
	<b>National</b>	<b>2 661</b>	<b>930</b>	<b>29 177</b>	<b>12 787</b>	<b>31 838</b>	<b>13 717</b>

Source: Ministry of Health and Child-welfare

**Table 1.19: Confirmed Schistosomiasis Cases & Incidences by Province & Age Group, 2022-2023**

Year	Province/City	Age Group					
		<5 yrs		5 yrs +		All Ages	
		Clinical Cases	Incidence rate	Clinical Cases	Incidence rate	Clinical Cases	Incidence rate
2022	Manicaland	304	1	7 803	4.5	8 107	4
	Mash Central	1 074	5.2	12 554	10.6	13 628	9.8
	Mash East	274	1	6 643	4	6 917	3.6
	Mash West	357	1.3	5 715	3.5	6 072	3.2
	Mat North	41	0.4	643	0.9	684	0.8
	Mat South	25	0.2	521	0.8	546	0.7
	Midlands	158	0.6	4 177	2.7	4 335	2.4
	Masvingo	186	0.8	6 831	4.8	7 017	4.3
	Harare	31	0.1	663	0.4	694	0.4
	Chitungwiza	0	0	12	0	12	0
	Bulawayo	17	0.2	53	0.1	70	0.1
	<b>National</b>		<b>2 467</b>	<b>1.2</b>	<b>45 615</b>	<b>3.5</b>	<b>48 082</b>
2023	Manicaland	245	0.8	6 569	3.764964	6 814	3.3
	Mash Central	2 291	11.1	10 182	8.63496048	12 473	9.0
	Mash East	246	0.9	6 935	4.16821685	7 181	3.7
	Mash West	320	1.2	5 069	3.12584791	5 389	2.8
	Mat North	71	0.6	615	0.85753368	686	0.8
	Mat South	33	0.3	503	0.76215008	536	0.7
	Midlands	142	0.6	4 123	2.65311559	4 265	2.4
	Masvingo	189	0.8	7 705	5.46188167	7 894	4.8
	Harare	36	0.2	209	0.1	245	0.1
	Chitungwiza	1	0.0	11	0	12	0.0
	Bulawayo	17	0.1	43	0.0719811	60	0.1
	<b>National</b>		<b>3 591</b>	<b>1</b>	<b>41 964</b>	<b>3.202713</b>	<b>45 555</b>

Source: Ministry of Health and Child-welfare

# Cancers

**Table 1.20: Number of Cancer Patients by Type of Cancer, Age Group, Sex and Year**

Year	Breast Cancer				Cervix		Prostate		Other Cancers			
	Females		Males		Females		Males		Females		Males	
	0-24years	25yrs+	0-24yrs	25yrs+	0-24yrs	25yrs+	0-24yrs	25yrs+	0-24yrs	25yrs+	0-24yrs	25yrs+
2018	16	522	2	35	59	1 752	8	1 190	70	1 078	152	1 126
2019	8	460	0	34	93	2 013	6	1 036	92	850	104	933
2020	14	348	50	50	29	1 071	72	798	65	602	79	492
2021	11	539	4	32	45	1 992	16	904	61	964	97	816
2022	15	435	1	45	40	1 531	19	860	448	831	121	930
2023	9	555	3	39	19	1 519	26	1 020	129	1 416	170	1 122

Source: Ministry of Health and Child-welfare

**Table 1.21: Number of Cancer Patients by Type of Cancer, Age Group, Sex and Province, 2023**

Province/ City	Breast Cancer				Cervix		Prostate		Other Cancers			
	Females		Males		Females		Males		Females		Males	
	0-24 yrs	25yrs+	0-24 yrs	25yrs+	0-24 yrs	25yrs+	0-24 yrs	25yrs+	0-24 yrs	25yrs+	0-24 yrs	25yrs+
Manicaland	0	28	0	4	0	34	0	143	5	161	8	108
Mash Central	0	13	0	0	1	37	1	85	7	50	9	36
Mash East	0	16	0	3	0	60	11	48	3	39	2	18
Mash West	1	10	0	0	0	49	0	42	1	8	9	13
Mat North	0	1	0	0	2	21	1	44	0	2	0	5
Mat South	0	9	0	1	1	22	1	17	0	12	0	12
Midlands	2	37	2	3	6	104	1	86	2	48	2	40
Masvingo	4	12	0	3	0	47	0	63	1	18	1	13
Harare	0	377	0	19	9	1057	9	393	95	886	118	783
Chitungwiza	0	1	0	0	0	1	1	2	0	1	0	0
Bulawayo	2	51	1	6	0	87	1	97	15	191	21	94
<b>National</b>	<b>9</b>	<b>555</b>	<b>3</b>	<b>39</b>	<b>19</b>	<b>1 519</b>	<b>26</b>	<b>1 020</b>	<b>129</b>	<b>1 416</b>	<b>170</b>	<b>1 122</b>

Source: Ministry of Health and Child-welfare

**Table 1.22: Kaposi Sarcoma Cases by Age Group, Sex and Year**

Year	25-49yrs		50yrs and over	
	Males	Females	Males	Females
2018	591	296	247	166
2019	151	74	95	42
2020	132	70	83	51
2021	104	34	54	27
2022	72	46	49	62
2023	81	69	70	42

*Source: Ministry of Health and Child-welfare*