



27th April 2026

ZWG CONSUMER PRICE INDEX APRIL 2026 (APRIL 2024 = 100)

ZWG Consumer Price Index

The ZWG Consumer Price Index (ZWG CPI) was **194.68** in April 2026, **192.58** in March 2026 and **185.68** in April 2025.

Month-on-Month Inflation Rate

The ZWG month-on-month inflation rate was **1.1** percent in April 2026, gaining 0.6 percentage points on the March 2026 rate of **0.5** percent.

This means that prices as measured by the all-items ZWG CPI, increased by an average rate of 1.1 percent from March 2026 to April 2026.

The month-on-month inflation rate is given by the percentage change in the price index of the reference month compared with the index of the previous month.

The ZWG month-on-month Food and Non-Alcoholic Beverages inflation rate was **1.5** percent in April 2026, gaining 1.2 percentage points on the March 2026 rate of **0.3** percent. The April 2026 ZWG month-on-month non-food inflation rate was **0.9** gaining 0.3 percentage points on the March 2026 rate of **0.6** percent

Year-on-Year Inflation Rate

The ZWG year-on-year inflation rate (annual percentage change) for the month of April 2026 as measured by the all-items ZWG Consumer Price Index (CPI), was **4.8** percent, gaining 0.4 percentage points on the March 2026 rate of **4.4** percent.

This means that prices as measured by the all-items ZWG CPI, increased by an average rate of 4.8 percent from April 2025 to April 2026.

Mean Month-on-Month Rate

The mean ZWG month-on-month inflation rate for the period January 2026 to April 2026 was **0.4** percent. The mean ZWG month-on-month inflation rate from January 2025 to December 2025 was **1.2** percent

Period of Data Collection

Data on prices were collected during the period 13th to 17th April 2026. Hence, the changes in prices in this report refer to that period of data collection.

Contact us:

Tel: +263 242 706681/7

E-mail: prices@zimstat.co.zw.

Table 1: Month-on-month inflation rate from April 2025 to April 2026

Apr-25	May-25	Jun-25	Jul-25	Aug-25	Sept-25	Oct-25	Nov-25	Dec-25	Jan-26	Feb-26	Mar-26	Apr-26
0.6	0.9	0.3	1.6	0.4	-0.2	-0.4	0.2	0.2	0.0	0.1	0.5	1.1

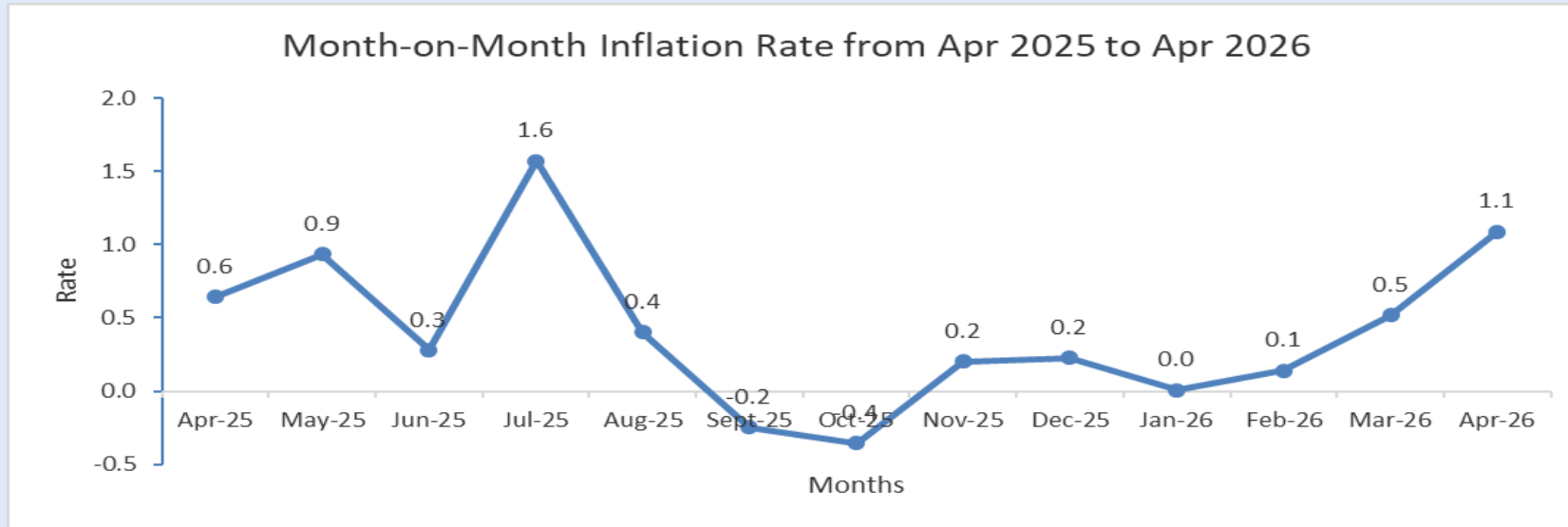


Figure 1: Month-on-month inflation rate from April 2025 to April 2026