



26th March 2026

WEIGHTED CONSUMER PRICE INDEX MARCH 2026 (APRIL 2024 = 100)

Weighted Consumer Price Index

The Weighted Consumer Price Index (CPI) was **128.40** in March 2026 and **127.75** in February 2026. In March 2025 it was **125.84**.

Month-on-Month Inflation Rate

The Weighted month-on-month inflation rate was **0.5** percent in March 2026, gaining 0.4 percentage points on the February 2026 rate of **0.1** percent.

This means that prices as measured by the all-items Weighted CPI, increased by an average rate of 0.5 percent from February 2026 to March 2026.

The month-on-month inflation rate is given by the percentage change in the price index of the reference month compared with the index of the previous month.

The weighted month-on-month Food and Non-Alcoholic Beverages inflation rate was **0.5** percent in March 2026, gaining 0.6 percentage points on the February 2026 rate of **-0.1** percent. The March 2026 Weighted month-on-month non-food inflation rate was **0.5** percent gaining 0.3 percentage points on the February 2026 rate of **0.2** percent.

Year-on-Year

The weighted year-on-year inflation rate (annual percentage change) for the month of March 2026 as measured by the all-items Weighted Consumer Price Index (CPI), was **2.0** percent, gaining 0.4 percentage point on the February 2026 rate of **1.6** percent.

This means that prices as measured by the all-items Weighted CPI, increased by an average rate of 2.0 percent from March 2025 to March 2026.

Period of Data Collection

Data on prices were collected during the period 11th to 17th March 2026. Hence, the changes in prices in this report refer to that period of data collection.

Mean Month-on-Month Rate

The mean month-on-month inflation rate for the period January to March 2026 was **0.2** percent. The mean month-on-month inflation rate for the period January to December 2025 was **1.1** percent.

Methodology

The Weighted Consumer Price Index (CPI) measures the combined price changes of goods and services in both the USD and ZWG aggregated geometrically.

Contact us:

Tel: +263 242 706681/7

E-mail: prices@zimstat.co.zw

Table 1: Month-on-month inflation rate from March 2025 to March 2026

Month	Mar-25	Apr-25	May-25	Jun-25	Jul-25	Aug-25	Sept-25	Oct-25	Nov-25	Dec-25	Jan-26	Feb-26	Mar-26
Rate	0.0	0.3	0.0	-0.1	0.6	0.0	-0.1	0.2	0.2	0.1	0.2	0.1	0.5

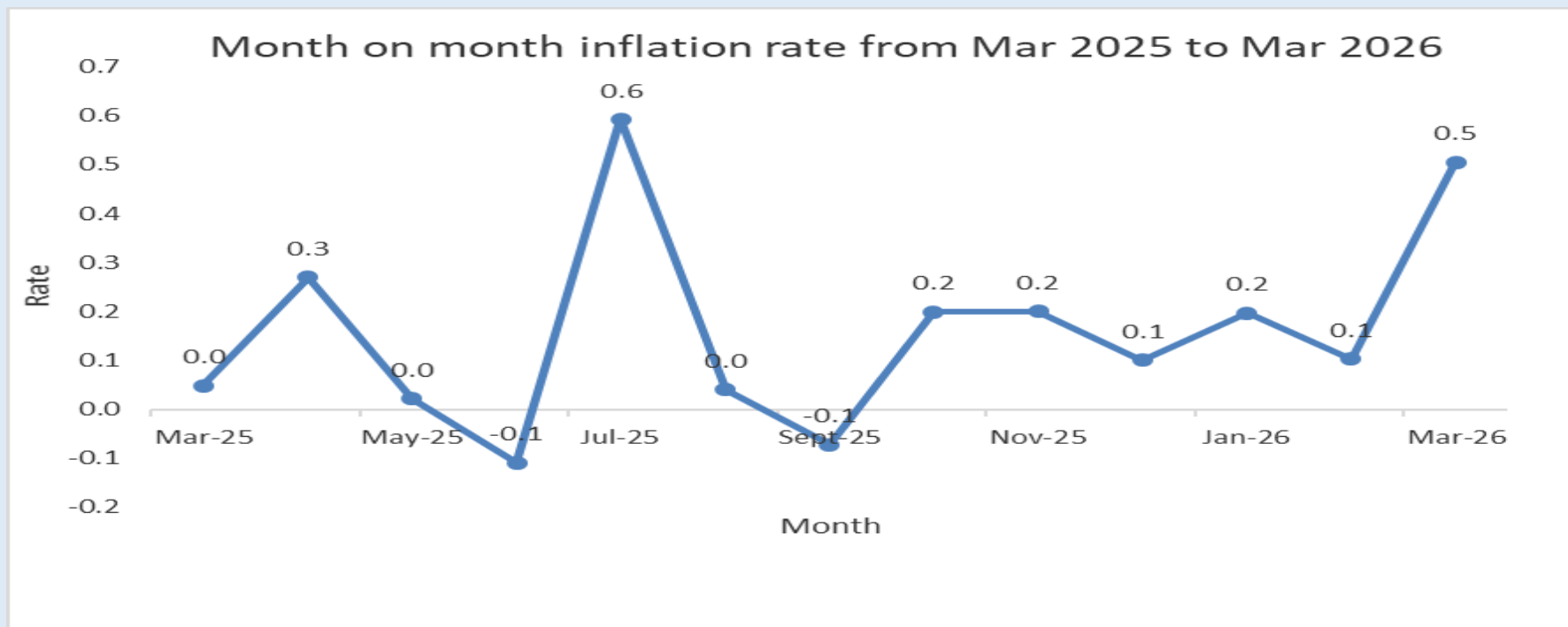


Figure 1: Month-on-month inflation rate from March 2025 to March 2026