



28th July 2025

WEIGHTED CONSUMER PRICE INDEX JULY 2025 (APRIL 2024 = 100)

Weighted Consumer Price Index

The Weighted Consumer Price Index (CPI) was **126.82** in July 2025 and **126.07** in June 2025. In July 2024 it was **99.03**.

Month-on-Month Inflation Rate

The Weighted month-on-month inflation rate was **0.6** percent in July 2025, gaining 0.7 percentage points on the June 2025 rate of **-0.1** percent.

This means that prices as measured by the all-items Weighted CPI, increased from June 2025 to July 2025.

The month-on-month inflation rate is given by the percentage change in the price index of the reference month compared with the index of the previous month.

The Weighted month-on-month Food and Non-Alcoholic Beverages inflation rate was **-0.1** percent, gaining 0.4 percentage points on the May 2025 rate of **-0.5** percent. The July 2025 Weighted month-on-month non-food inflation rate was **1.0** percent gaining 0.9 percentage points on the June 2025 rate of **0.1** percent.

Year-on-Year Year on Year

The weighted year-on-year inflation rate (annual percentage change) for the month of July 2025 as measured by the all-items USD Consumer Price Index (CPI), was **28.1** percent.

This means that prices as measured by the all-items Weighted CPI, increased by an average of 28.1 percent from July 2024 to July 2025.

Period of Data Collection

Data on prices were collected during the period 11th to 17th July 2025. Hence, the changes in prices in this report refer to that period of data collection.

Mean Month-on-Month Rate

The mean month-on-month inflation rate for the period January to July 2025 was **1.8** percent.

Methodology

The Weighted Consumer Price Index (CPI) measures the combined price changes of goods and services in both the USD and ZWG aggregated geometrically.

Contact us:

Tel: +263 242 706681/7
E-mail: prices@zimstat.co.zw.

Table 1: Month-on-month inflation rate from July 2024 to July 2025

| Month | Jul-24 | Aug-24 | Sept-24 | Oct-24 | Nov-24 | Dec-24 | Jan-25 | Feb-25 | Mar-25 | Apr-25 | May-25 | Jun-25 | Jul-25 |
|-------|--------|--------|---------|--------|--------|--------|--------|--------|--------|--------|--------|--------|--------|
| Rate | -0.1 | 0.4 | 1.9 | 7.3 | 2.2 | 1.1 | 11.6 | 0.3 | 0.0 | 0.3 | 0.0 | -0.1 | 0.6 |

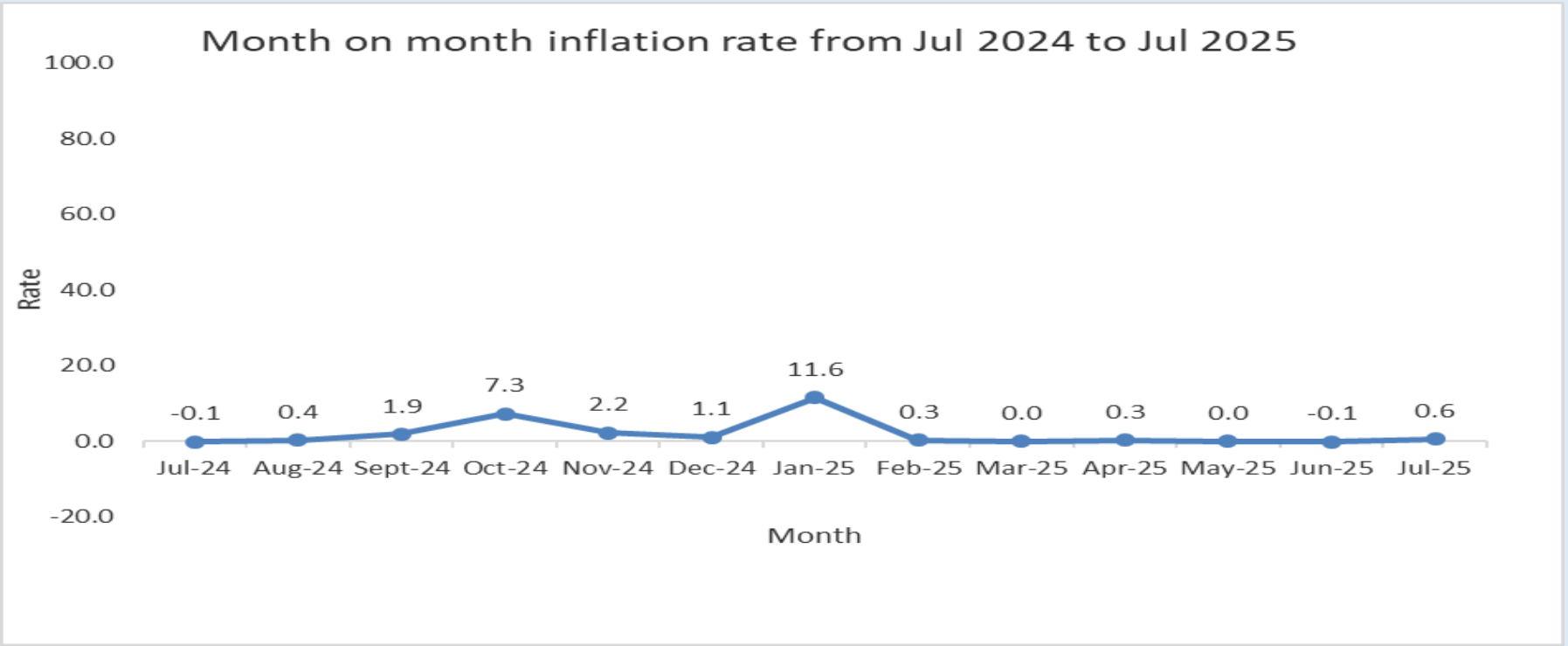


Figure 1: Month-on-month inflation rate from July 2024 to July 2025