

# Index of Electricity Generation

## 1<sup>st</sup> Quarter 2023



# INDEX OF ELECTRICITY GENERATION

1<sup>st</sup> QUARTER 2023

**For more information contact:**

Zimbabwe National Statistics Agency  
P.O. Box CY 342  
Causeway, Harare  
Zimbabwe

Telephone: 263-242-706681/8 or 263-242-703971/7

Email: [industry@zimstat.co.zw](mailto:industry@zimstat.co.zw)

Website: [www.zimstat.co.zw](http://www.zimstat.co.zw)

## Table of Contents

1. Introduction .....	1
2. Index of Electricity Generation .....	1
3. Electricity imported .....	2
4. Electricity Exported.....	3
5. Electricity Distributed .....	4

## List of Figures

Figure 1: Index of Electricity Generation, 1 <sup>st</sup> quarter 2019 to 1 <sup>st</sup> quarter 2023 .....	1
Figure 2: Volume of electricity generated by power producer, 1 <sup>st</sup> quarter 2023 .....	2
Figure 3: Volume of electricity imported, 1 <sup>st</sup> quarter 2019 to 1 <sup>st</sup> quarter 2023 .....	2
Figure 4: Share of electricity imported by source, 1 <sup>st</sup> quarter 2023.....	3
Figure 5: Volume of electricity exported (GWh), 1 <sup>st</sup> quarter 2019 to 1 <sup>st</sup> quarter 2023.....	3
Figure 6: Volume of electricity exported, 1 <sup>st</sup> quarter 2023 .....	3
Figure 7: Volume of electricity distributed, 1 <sup>st</sup> quarter 2019 to 1 <sup>st</sup> quarter 2023 .....	4
Figure 8: Volume of electricity distributed to user, 1 <sup>st</sup> quarter 2023 .....	4

## List of Appendices

Appendix A: Volume of Electricity Generation in GWh, 2019 to 1 <sup>st</sup> 2023 .....	5
Appendix B: Index of Electricity Generation, 2019 to 1 <sup>st</sup> quarter 2023 (2019=100) .....	5
Appendix C: Year-on-Year Percentage change in Index of Electricity Generation, 2019 to 1 <sup>st</sup> 2023 ....	5
Appendix D: Quarter-on-Quarter Percentage Change in Index of Electricity Generation, 2019 to 1 <sup>st</sup> quarter 2023 .....	5
Appendix E: Volume of Electricity Imported in GWh, 1 <sup>st</sup> quarter 2019 to 1 <sup>st</sup> quarter 2023.....	6

## 1. Introduction

This publication presents the Index of Electricity Generation (IEG) covering the period 1<sup>st</sup> quarter 2019 to 1<sup>st</sup> quarter 2023. Index of Electricity Generation is an economic indicator that shows relative changes in the volume of electricity generated in the country over time, in relation to a given reference period.

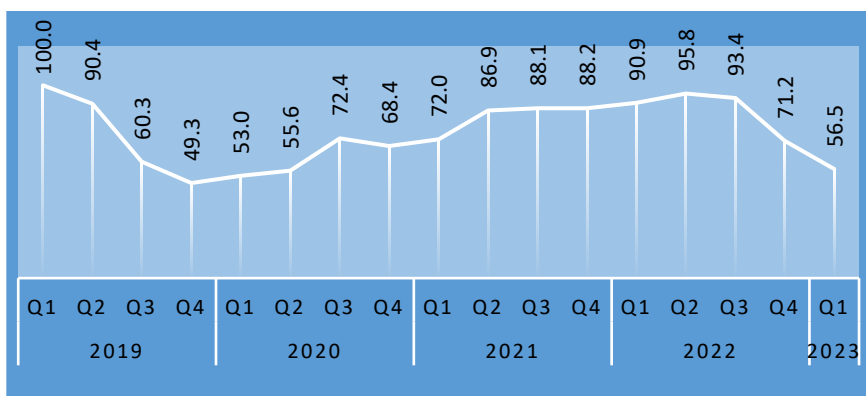
Construction of the IEG is based on administrative data obtained from the Zimbabwe Electricity Supply Authority.

The Laspeyres Index was used to compile the indices with 2019 as the base year. The index calculation is in line with the United Nations International Recommendations for the Index of Industrial Production (IRIIP), 2010.

## 2. Index of Electricity Generation

The Index of Electricity Generation for 1<sup>st</sup> quarter 2023 was **56.5**, reflecting a year-on-year percentage decrease of **37.8** from **90.9** recorded in 1<sup>st</sup> quarter 2022. The

quarter-on-quarter comparison shows a **20.6** percent decrease in the index from **71.2** in 4<sup>th</sup> quarter 2022 to **56.5** in 1<sup>st</sup> quarter 2023. **(Figure 1)**



Quarter	Electricity Generated (GWh)
Q1 '21	2267.0
Q4 '22	1797.0
Q1 '23	1,409.9

Figure 1: Index of Electricity Generation, 1<sup>st</sup> quarter 2019 to 1<sup>st</sup> quarter 2023

A total of **1,410GWh** of electricity were generated during 1<sup>st</sup> quarter 2023. Kariba Power Station and Hwange accounted for

**45.4** and **43.7** percent, respectively. **(Figure 2)**

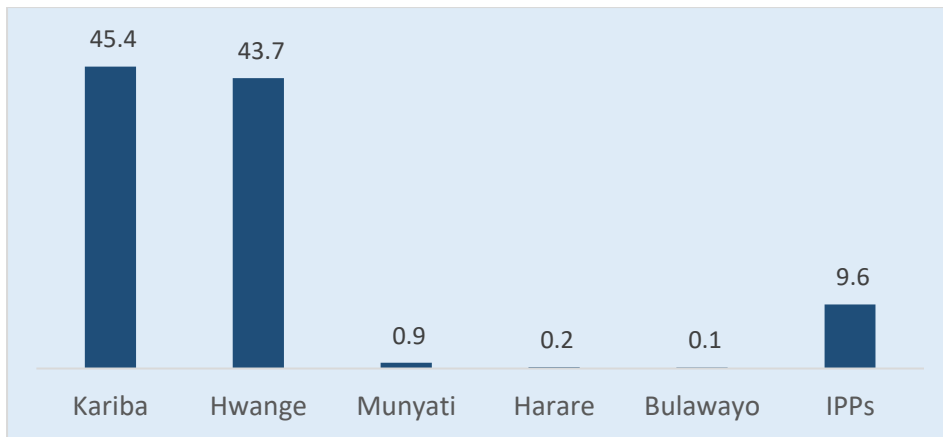


Figure 2: Volume of electricity generated by power producer, 1<sup>st</sup> quarter 2023

### 3. Electricity imported

Quarter-on-quarter analysis shows that **863.4GWh** of electricity were imported during 1<sup>st</sup> quarter 2023, reflecting a **26.8**

percent increase from **681.1GWh** in 4<sup>th</sup> quarter 2022. **(Figure 3)**

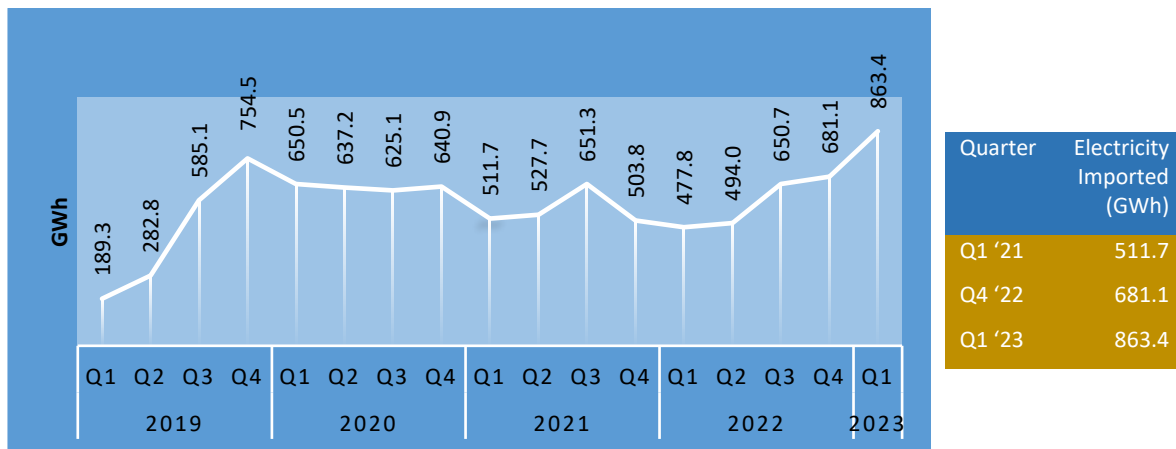


Figure 3: Volume of electricity imported, 1<sup>st</sup> quarter 2019 to 1<sup>st</sup> quarter 2023

Of the electricity imported during 1<sup>st</sup> quarter 2023, **32.8** percent was from EDM

Mozambique and **29.0** percent from ESKOM South Africa. **(Figure 4)**

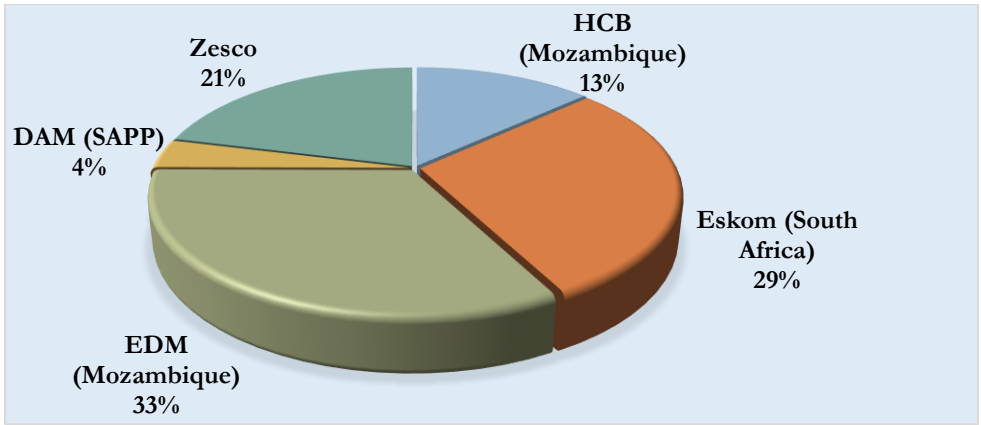


Figure 4: Share of electricity imported by source, 1<sup>st</sup> quarter 2023

#### 4. Electricity Exported

The **82.7GWh** of electricity exported in 1<sup>st</sup> quarter 2023, was **23.3** percent less than

**107.8GWh** exported during 4<sup>th</sup> quarter 2022. **(Figure 5)**

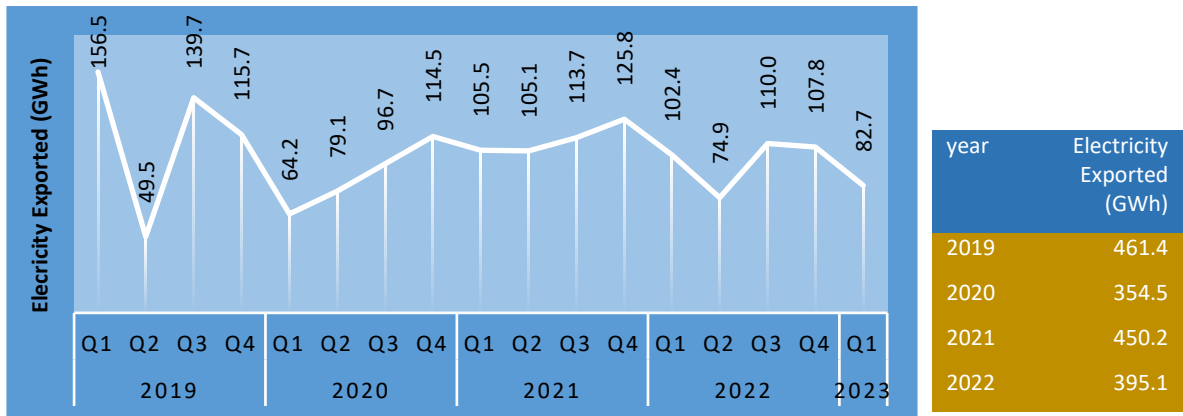


Figure 5: Volume of electricity exported (GWh), 1<sup>st</sup> quarter 2019 to 1<sup>st</sup> quarter 2023

NamPower of Namibia received **99.8** percent of the **82.7 GWh** of electricity that

were exported during 1<sup>st</sup> quarter 2023. **(Figure 6)**

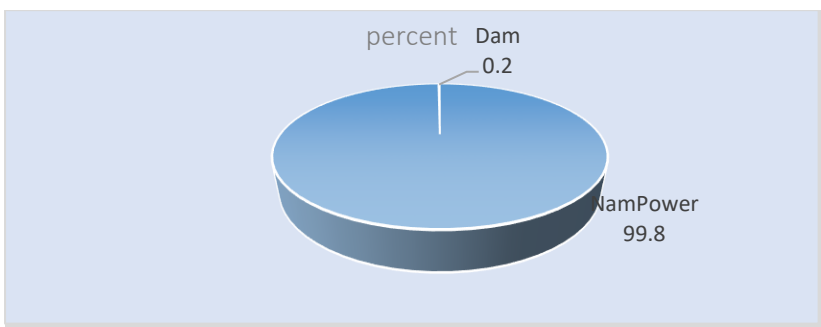


Figure 6: Volume of electricity exported, 1<sup>st</sup> quarter 2023

## 5. Electricity Distributed

The total volume of electricity distributed in 1<sup>st</sup> quarter 2023 was **2,002.9GWh**, resulting in a **10.3** percent decline from

**2,233.36GWh** distributed in 4<sup>th</sup> quarter 2022. **(Figure 7)**

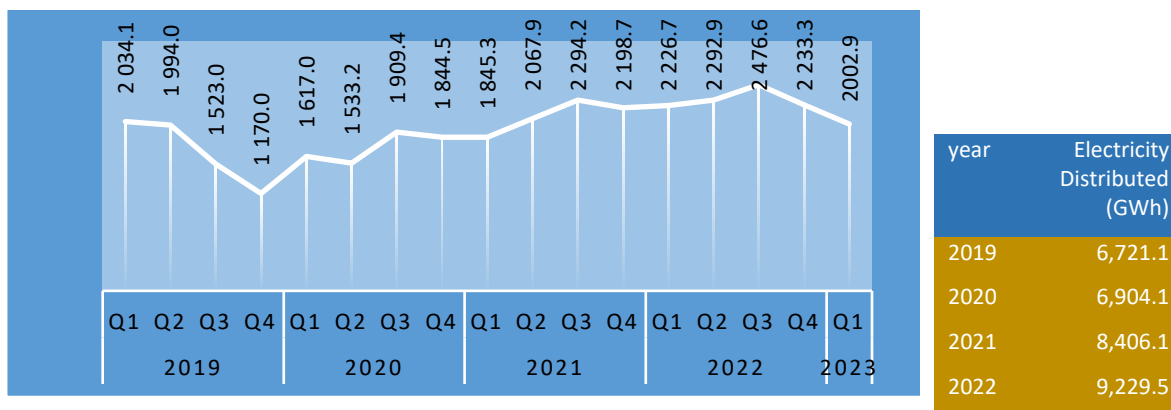


Figure 7: Volume of electricity distributed, 1<sup>st</sup> quarter 2019 to 1<sup>st</sup> quarter 2023

Of the distributed electricity, users in manufacturing, transport and

construction sectors consumed **544.6GWh**. **(Figure 8)**

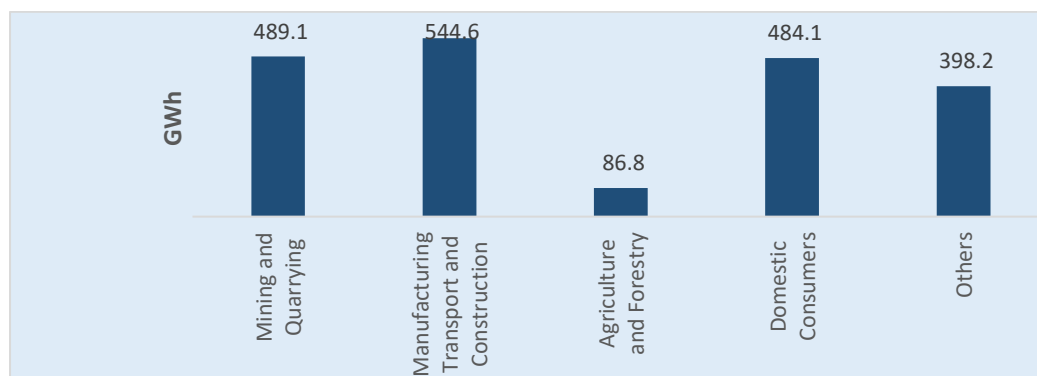


Figure 8: Volume of electricity distributed to user, 1<sup>st</sup> quarter 2023

**Appendix A: Volume of Electricity Generation in GWh, 2019 to 1<sup>st</sup> quarter 2023**

	2019	2020	2021	2022	2023
January	840.6	411.6	593.4	705.5	471.1
February	814.2	446.4	569.0	733.5	426.2
March	839.4	478.9	652.6	827.8	512.7
April	808.8	411.8	697.9	737.0	
May	762.9	475.2	748.4	836.7	
June	708.9	516.3	746.0	843.1	
July	628.7	607.4	770.4	853.7	
August	469.0	591.0	728.5	783.4	
September	423.8	628.2	723.1	717.6	
October	440.2	601.2	755.7	728.3	
November	373.6	575.7	719.5	617.1	
December	429.9	548.8	748.0	451.6	
Q1	2,494.2	1,337.0	1,815.0	2,267.1	1,410
Q2	2,280.5	1,403.2	2,192.4	2,416.8	
Q3	1,521.6	1,826.6	2,222.0	2,354.8	
Q4	1,243.7	1,725.7	2,223.2	1,797.0	
<b>Total</b>	<b>7,540.1</b>	<b>6,292.5</b>	<b>8,452.6</b>	<b>8,835.6</b>	

**Appendix B: Index of Electricity Generation, 2019 to 1<sup>st</sup> quarter 2023 (2019=100)**

	2019	2020	2021	2022	2023
Q1	100.0	53.0	72.0	90.9	56.5
Q2	90.4	55.6	86.9	95.8	
Q3	60.3	72.4	88.1	93.4	
Q4	49.3	68.4	88.2	71.2	
<b>Total</b>	<b>74.8</b>	<b>62.4</b>	<b>83.8</b>	<b>87.8</b>	

**Appendix C: Year-on-Year Percentage change in Index of Electricity Generation, 2019 to 1<sup>st</sup> quarter 2023**

	2019	2020	2021	2022	2023
Q1	-	-46.4	35.8	26.3	(38.5)
Q2	-	-38.5	56.2	10.2	
Q3	-	20.0	21.6	6.0	
Q4	-	38.8	28.8	(19.2)	

**Appendix D: Quarter-on-Quarter Percentage Change in Index of Electricity Generation, 2019 to 1<sup>st</sup> quarter 2023**

	2019	2020	2021	2022	2023
Q1	-	7.5	5.2	3.1	(21.5)
Q2	(8.6)	5.0	20.8	5.4	
Q3	(33.3)	30.2	1.4	(2.5)	
Q4	(18.3)	(5.5)	0.1	(23.8)	



**Appendix E: Volume of Electricity Imported in GWh, 1<sup>st</sup> quarter 2019 to 1<sup>st</sup> quarter 2023**

	2019	2020	2021	2022	2023
Jan	55.2	275.3	160.1	170.6	326.9
Feb	49.8	155.7	139.6	141.3	302.7
Mar	84.4	219.5	212.0	165.9	233.8
Apr	87.4	191.9	166.0	166.5	
May	88.4	206.2	182.8	151.1	
Jun	107.0	239.1	178.9	176.4	
Jul	93.4	212.6	216.7	169.7	
Aug	225.0	221.2	226.6	256.5	
Sep	266.7	191.3	208.1	224.5	
Oct	285.1	230.4	175.3	222.8	
Nov	268.4	195.0	155.0	201.2	
Dec	201.0	215.5	173.6	257.2	
Q1	189.3	650.5	511.7	477.8	863.4
Q2	282.8	637.2	527.7	494.0	
Q3	585.1	625.1	651.3	650.7	
Q4	754.5	640.9	503.8	681.1	
<b>Total</b>	<b>1,811.7</b>	<b>2553.7</b>	<b>2194.4</b>	<b>2303.7</b>	

**Appendix F: Volume of Electricity exported in GWh, 2019 to 1<sup>st</sup> quarter 2023**

	2019	2020	2021	2022	2023
Jan	61.2	25.0	33.7	27.1	26.8
Feb	72.6	8.0	35.3	35.7	33.92
Mar	22.6	31.3	36.6	39.7	35.12
Apr		15.4	30.9	14.2	
May	4.4	27.9	34.2	24.6	
Jun	45.1	35.7	40.0	36.1	
Jul	63.4	34.8	40.6	35.5	
Aug	39.9	29.0	36.5	38.9	
Sep	36.4	32.9	36.6	35.6	
Oct	38.0	35.2	38.4	37.9	
Nov	38.1	37.7	44.2	39.3	
Dec	39.7	41.7	43.2	30.6	
Q1	156.5	64.2	105.5	102.4	95.84
Q2	49.5	79.1	105.1	74.9	
Q3	139.7	96.7	113.7	110.0	
Q4	115.7	114.5	125.8	107.8	
<b>Total</b>	<b>461.4</b>	<b>354.5</b>	<b>450.2</b>	<b>395.1</b>	

**Appendix G: Volume of Electricity distributed in GWh, 2019 to 1<sup>st</sup> quarter 2023**

	2019	2020	2021	2022	2023
January	688.6	525.0	599.0	688.6	651.0
February	667.4	513.0	579.7	738.3	634.7
March	678.1	579.0	666.6	799.8	717.2
April	643.0	516.0	619.6	752.7	
May	715.0	482.0	756.5	754.2	
June	636.0	535.2	691.8	786.0	
July	654.0	590.0	681.0	822.6	
August	476.0	670.5	819.5	779.9	
September	393.0	648.9	793.7	874.1	
October	402.0	625.2	737.3	842.0	
November	395.0	606.4	724.4	710.3	
December	373.0	612.9	737.0	681.0	
Quarter 1	2 034.1	1 617.0	1 845.3	2 226.7	2 002.9
Quarter 2	1 994.0	1 533.2	2 067.9	2 292.9	
Quarter 3	1 523.0	1 909.4	2 294.2	2 476.6	
Quarter 4	1 170.0	1 844.5	2 198.7	2 233.3	
<b>Total</b>	<b>6 721.1</b>	<b>6 904.1</b>	<b>8 406.1</b>	<b>9 229.5</b>	